

2021 Renegade Classic Motorhome Customer Prices



Westside Motorcoach
 11201 S. Grant Hwy
 Marengo, IL 60152
 (847)812-2972
 (815)923-0101 Fax

Customer Name:
 Address:
 Phone Number:
 Fax Number:
 E-mail Address:

Renegade Motorhome Standard Features and Options

| Qty. | Description | Price | Extension |
|---|---|------------|------------|
| Chassis Options | | | |
| 0 | Volvo VNL 500HP 1,850 D13 w/ I-Shift, Tandem, LED, EHC, Disc | \$ 209,997 | \$ - |
| 0 | 2021 Volvo VNR 500HP 1,850 D13 w/ I-Shift, Tandem, LED, EHC, Disc | \$ 196,000 | \$ - |
| 0 | Volvo VNR 500HP 1,850 D13 w/ I-Shift, Tandem, LED, EHC, Disc | \$ 206,584 | \$ - |
| 0 | Volvo VNR 500HP 1,850 D13 w/ I-Shift, Single, LED, EHC, Disc | \$ 196,679 | \$ - |
| 1 | 2019 Freightliner Cascadia 560HP DD16, DT12, Single, Safety Pkg | \$ 170,909 | \$ 170,909 |
| 0 | P4 Freightliner Cascadia 600HP DD16, DT12, Single, Safety Pkg | \$ 197,176 | \$ - |
| 0 | P4 Freightliner Cascadia 600HP DD16, DT12, Tandem, Safety Pkg | \$ 209,227 | \$ - |
| 0 | P4 Freightliner Cascadia 600HP DD16, Allison, Tandem, Safety Pkg | \$ 216,378 | \$ - |
| 0 | Western Star 5700XE 600HP 2,050 D16 w/ DT12, Tandem | \$ 204,400 | \$ - |
| 0 | 2021 Peterbilt 567 605 HP, Ultra-Shift, 1,850 Torque, Tandem Axle | \$ 209,255 | \$ - |
| 0 | 2021 Peterbilt 567 565 HP, Allison, 1,850 Torque, Tandem Axle | \$ 222,809 | \$ - |
| 0 | 2021 Peterbilt 567 605 HP, Ultra-Shift, 1,850 Torque, Single Axle | \$ 199,574 | \$ - |
| 0 | 2021 Peterbilt 567 565 HP, Allison, 1,850 Torque, Single Axle | \$ 212,234 | \$ - |
| 1 | Single Axle Chassis Shrink/Stretch | \$ 3,500 | \$ 3,500 |
| 0 | Tandem Axle Chassis Shrink/Stretch | \$ 3,850 | \$ - |
| 0 | Dealer Supplied Chassis (per quote) | \$ 3,500 | \$ - |
| Some Chassis Have Limited Availability | | | |
| Conversion Model | | | |
| 0 | 37' Mid Bath Mid Entry Motorhome- 37CTS | \$ 226,428 | \$ - |
| 1 | 38' Mid Bath Front Entry Motorhome- 38CSB | \$ 229,872 | \$ 229,872 |
| 0 | 40' Mid Bath Front Entry Motorhome- 40CMB | \$ 238,560 | \$ - |
| 0 | 41' Mid Bath Front Entry Motorhome- 41CFM | \$ 242,168 | \$ - |
| 0 | 41' Bath & Half Front Entry Motorhome- 41CRB | \$ 245,136 | \$ - |
| 0 | 41' Mid Bath Front Entry Motorhome- 41CRW | \$ 243,467 | \$ - |
| 0 | 42' Bath & Half Front Entry Motorhome- 42CRB | \$ 247,663 | \$ - |
| 0 | 45' Mid Bath Mid Entry Motorhome- 45CMB | \$ 262,714 | \$ - |
| 0 | 45' Bath & Half Mid Entry Motorhome- 45CBH | \$ 258,518 | \$ - |
| 0 | 45' Five Slide, Mid Entry, Mid Bath, Rear Closet Slide- 45CRS | \$ 261,524 | \$ - |
| 0 | 45' Bath & Half Mid Entry Motorhome- 45CMR | \$ 265,807 | \$ - |
| 0 | 45' Bath & 1/2 Mid Entry Motorhome- 45CME | \$ 265,807 | \$ - |
| 0 | 45' Triple Slide, Front Entry, Two Bath- 45CBF | \$ 267,068 | \$ - |
| 0 | 45' Bath & Half Mid-Entry Bunkhouse- 45CBQ | \$ 271,327 | \$ - |
| 0 | extra 1' length | \$ 3,500 | \$ - |
| 1 | Non-Standard Floorplan | \$ 7,000 | \$ 7,000 |
| 0 | Non-Standard Interior Material Selections | \$ 2,100 | \$ - |

2021 Renegade Classic Motorhome Customer Prices

| Qty. | Description | Price | Extension |
|--|---|----------|-----------|
| Exterior Features & Options | | | |
| 1 | Renegade Universal Adjustable Hitch | \$ - | \$ - |
| 1 | 30,000 Lb. 2-5/16" Ball Hitch- STD Tandem Axle | \$ - | \$ - |
| 1 | 12,000 lb 2" Tube Hitch- Ltd Tongue Weight (single axle models) | \$ - | \$ - |
| 1 | White Side-hinged luggage doors with strut assist- STD | \$ - | \$ - |
| 1 | Power Locking Side Swing Baggage Doors - Where Applicable- STD | \$ - | \$ - |
| 1 | Electric Trailer Brake Controller w/ Digital Display- STD | \$ - | \$ - |
| 1 | Full 7 '6" Interior Height (90")- STD | \$ - | \$ - |
| 1 | Undercoating- STD | \$ - | \$ - |
| 1 | Third Brake Light- STD | \$ - | \$ - |
| 1 | LED Docking Lights- STD | \$ - | \$ - |
| 1 | Full Width mud-flap w/ Stainless Steel Renegade logo- STD | \$ - | \$ - |
| 1 | Lighted grab handle with Trimark Keyless Entry- STD | \$ - | \$ - |
| 1 | 4 Point Auto Leveling System w/ App Control- STD | \$ - | \$ - |
| 1 | 48" Cabover Bunk- STD | \$ - | \$ - |
| 1 | Commercial Grade 5/8" FRP Construction- STD | \$ - | \$ - |
| 1 | 2" x 2" Tube Steel Frame Built on the Chassis- STD | \$ - | \$ - |
| 1 | Coach Floor Is a "Super Sandwich" - Galvanized Vapor Barrier over Steel Frame, Studded with 2x4's Screwed to Frame- STD | \$ - | \$ - |
| 1 | Insulated with Rigid Foam, then Topped with 3/4 Fir Plywood- STD | \$ - | \$ - |
| 1 | 2" x 2" Studded Walls and 2" x 3" Ceiling with Rigid Foam Insul.- STD | \$ - | \$ - |
| 1 | Side Wall & Roof with R8 Insulation Factor- STD | \$ - | \$ - |
| 1 | 100% Walk On Roof- STD | \$ - | \$ - |
| 1 | Powder Coated Steel Storage Compartments with Felt liner & light- STD | \$ - | \$ - |
| 1 | Heavy Duty Electric Double Entrance Step w/Even Stair Tread- STD | \$ - | \$ - |
| 1 | 26" x 78" Entry Door w/Window, Deadbolt and Screen Door- STD | \$ - | \$ - |
| 1 | Porch Light at Entrance Door- STD | \$ - | \$ - |
| 1 | Aluminum Wheels with Center Caps, Hub Covers & Nut Covers- STD | \$ - | \$ - |
| 1 | D.O.T. Approved LED Marking and Signaling Lights- STD | \$ - | \$ - |
| 1 | Mounted Glad Hands- STD | \$ - | \$ - |
| 1 | 7 Pin Bargeman Plug for Trailer Hookup- STD | \$ - | \$ - |
| 0 | 30,000 lb. 2-5/16" Tag Hitch (Tandem Axle MH Models) (STD 32'+) | \$ 371 | \$ - |
| 1 | 20,000 lb 2" Hitch- (Std Single Axle Models) | \$ - | \$ - |
| 0 | 20k 2" Square Receiver Tube Insert- Ship Loose | \$ 371 | \$ - |
| 0 | 20 mil TempCoat- Walls & Ceiling Only- per foot | \$ 112 | \$ - |
| 0 | 20 mil TempCoat- Walls, Ceiling, Floor- per foot | \$ 140 | \$ - |
| 0 | 60" X 96" Larger Bunk Area | \$ 1,610 | \$ - |
| 1 | Bright Stainless Side Swing Baggage Doors (IPO STD) | \$ 693 | \$ 693 |
| 0 | Stainless Steel on Bunk Exterior (Only w/ SS Baggage Doors) | \$ 350 | \$ - |
| 0 | Spray in Liner in Cargo Boxes | \$ 2,310 | \$ - |
| 1 | Diamond Shield Anti-Chip Protection- Required on Painted Units | \$ 1,050 | \$ 1,050 |
| 3 | 12v LED Scene Light | \$ 322 | \$ 966 |
| 0 | Cab Cutout 29" x 29" | \$ 700 | \$ - |
| 0 | Underbody LED Lights- Color Changing w/ Controller | \$ 1,330 | \$ - |
| 0 | Color Changing Led Lights Under the Slideouts | \$ 1,120 | \$ - |
| 0 | One Storage Box to be 6' Wide w/ (2) Doors | \$ 490 | \$ - |
| 0 | Insulated Escape Hatch in Cabover bunk | \$ 490 | \$ - |
| 6 | Additional Clearance Lights | \$ 35 | \$ 210 |
| 0 | Extra Taillights-Configuration #3 | \$ 1,680 | \$ - |
| 1 | Mid-Ship Turn Signals | \$ 105 | \$ 105 |
| 0 | 3/4 Rear Pass-Through Storage Compartment (N/A w/ all w/Options) | \$ 770 | \$ - |
| 1 | Aero Cap- Fixed Bunk, No Stand-Up, Walk Thru | \$ 4,200 | \$ 4,200 |

2021 Renegade Classic Motorhome Customer Prices

| Qty. | Description | Price | Extension |
|------|--|-----------|-----------|
| 0 | Full Walk Thru Aero Cap | \$ 7,000 | \$ - |
| 0 | TempCoat Sewage & Water Management Boxes | \$ 735 | \$ - |
| 28 | Spray Foam Insulation Walls & Ceiling | \$ 154 | \$ 4,312 |
| 0 | Blue Board Foam Insulation | \$ 41 | \$ - |
| 1 | Chrome Cargo Box Handles | \$ 420 | \$ 420 |
| 1 | 12v & 110v Recept. In Storage Box | \$ 140 | \$ 140 |
| 1 | Extra 110v Recept. In Power Cord In Storage Box | \$ 126 | \$ 126 |
| 0 | Additional Exterior 110v Receptacle | \$ 168 | \$ - |
| | Paint | \$ - | \$ - |
| 1 | Full Body Paint- Duplicate K01-3051 | \$ 25,200 | \$ 25,200 |
| 0 | Paint Roof Mounted Awning | \$ 840 | \$ - |
| 0 | Paint Awning and RS Profile | \$ 1,260 | \$ - |
| 0 | Paint Awnings and Roof Rail | \$ 4,060 | \$ - |
| 1 | Paint Aero Cap and Transitions | \$ 2,555 | \$ 2,555 |
| | Warranty | \$ - | \$ - |
| 1 | One Year Limited Conversion Warranty | \$ - | \$ - |
| | Slide Outs- Per Floorplan | \$ - | \$ - |
| 0 | 6' Slideout Room by Floorplan | \$ 5,390 | \$ - |
| 0 | 12' Slideout Room by Floorplan | \$ 6,930 | \$ - |
| 0 | Rear Wardrobe Slide- Standard by Floorplan | \$ 6,930 | \$ - |
| 0 | Kitchen Slideout Room by Floorplan | \$ 6,930 | \$ - |
| 0 | Wardrobe Slideout by Floorplan | \$ 6,930 | \$ - |
| 0 | Bunk & Closet Slideout Ensemble | \$ 9,625 | \$ - |
| 0 | Bed Slideout by Floorplan (150 Gallon Fresh Water) | \$ 5,810 | \$ - |
| 0 | 15' LQ Slideout Upgrade- Requires Residential Fridge | \$ 1,533 | \$ - |
| 0 | Upgrade Kitchen slide to 11' | \$ 1,680 | \$ - |
| 0 | Upgrade C/S Rear Closet to Include Vanity | \$ 1,680 | \$ - |
| | Awnings | \$ - | \$ - |
| 0 | Carefree w/ Lighted Lead Rail- 18' and less- STD | \$ - | \$ - |
| 0 | Carefree Lateral Arm w/ Lighted Lead Rail- 19'-22' | \$ 1,785 | \$ - |
| 0 | Awning Hardware Color: _____ w/ _____ Fabric | \$ - | \$ - |
| 0 | Slide Topper Awning Hardware Color: White w/ Black Fabric | \$ - | \$ - |
| 1 | Girard Nova 2 ILO Carefree 18' | \$ 371 | \$ 371 |
| 0 | Girard Vision ILO Carefree 18' for Roof Mount (12' 2") | \$ 1,092 | \$ - |
| 0 | Add Second Girard Awning (19' 8" & 12' 2" Roof Mounted) | \$ 5,551 | \$ - |
| 0 | (2) Matching Girard Awnings Road Side | \$ 8,008 | \$ - |
| 0 | Awnings Over Windows (ea.) | \$ 385 | \$ - |
| 0 | Single Power Awnings Over Window (ea.) | \$ 1,379 | \$ - |
| 0 | Double Power Awning Over Window (ea.) | \$ 1,813 | \$ - |
| 0 | ZipDee Century II 2-Stage Awning w/Lighted Lead Rail- Roof Mounted | \$ 12,152 | \$ - |
| 0 | Roof Mount Awning Can- R/S | \$ 5,593 | \$ - |
| | Windows | \$ - | \$ - |
| 0 | Bonded Thermopane Windows- STD | \$ - | \$ - |
| 0 | United Manual Day/ Manual Night Shades- STD | \$ - | \$ - |
| 1 | United Power Night/Manual Day Window Shades | \$ 840 | \$ 840 |
| 1 | Skylight Over Shower | \$ 413 | \$ 413 |
| 0 | 2 Bunk Windows 12x30 w/ Valances & Shades | \$ 735 | \$ - |

2021 Renegade Classic Motorhome Customer Prices

| Qty. | Description | Price | Extension |
|------|---|--------|-----------|
| 0 | Single Bunk Window 12x30 w/ Valance & Shade | \$ 371 | \$ - |
| 1 | Cab Window Tint | \$ 315 | \$ 315 |
| 1 | Add 36" x 24" Non-Opening Window w/Valance & Shade | \$ 735 | \$ 735 |
| 0 | 48" x 24" Non-Opening Window w/Valance & Shade IPO Standard | \$ 6 | \$ - |
| 0 | 48" x 30" Picture Window - at Credenza or Dinette, no OHC | \$ 6 | \$ - |

Interiors

| | | | |
|----|--|----------|----------|
| 1 | Cab / Conversion Divider Privacy Shade- STD | \$ - | \$ - |
| 1 | Hardware & Fixture Finish- Brushed Nickel- STD | \$ - | \$ - |
| 1 | "Soft Touch" Padded Vinyl Ceiling (White)- STD | \$ - | \$ - |
| 1 | Décor Package- _____, _____ Valances | \$ - | \$ - |
| 1 | Bedding- STD | \$ - | \$ - |
| 1 | Full 90" Interior Height | \$ - | \$ - |
| 1 | Large Cab Walk Through w/Flexible Rubber Boot & Privacy Shade- STD | \$ - | \$ - |
| 1 | Electric Trailer Brake Controller with Digital Display- STD | \$ - | \$ - |
| 1 | Raised 6 Panel Interior Passage Doors- STD | \$ - | \$ - |
| 1 | Accent Lighting Throughout with Wall Switches- STD | \$ - | \$ - |
| 1 | Décor Maple Valances Around Windows- STD | \$ - | \$ - |
| 1 | 48" x 95" Bunk Over Cab- STD | \$ - | \$ - |
| 1 | Double Bay Stainless Steel Sink in Kitchen with Covers- STD | \$ - | \$ - |
| 1 | Solid Maple Mirrored Medicine Cabinet in Bath- STD | \$ - | \$ - |
| 0 | Padded Walls w/ Wainscoting- Std Fabric- Per Foot | \$ 84 | \$ - |
| 28 | Padded Walls w/ Wainscoting- Optional Fabric- Per Foot | \$ 105 | \$ 2,940 |
| 0 | Padded Walls- No Wainscoting- Std Fabric- Per Foot | \$ 84 | \$ - |
| 0 | Padded Walls- No Wainscoting- Optional Fabric- Per Foot | \$ 105 | \$ - |
| 1 | Multiplex Control System w/ App Control | \$ 4,193 | \$ 4,193 |
| 1 | Wood Valances- 2015 Classic Style w/ NO Décor Tops | \$ - | \$ - |
| 1 | Ship Décor Tops Loose | \$ - | \$ - |
| 1 | Infinity Light | \$ 700 | \$ 700 |
| 0 | Full Length Mirror (one is standard) | \$ 210 | \$ - |
| 0 | Cab Privacy Curtain- Rail Type | \$ 315 | \$ - |
| 0 | Cab / Conversion Divider (Wood Doors) | \$ 1,330 | \$ - |
| 0 | Entryway Walls all Wood No Padded Walls in this Area | \$ 70 | \$ - |
| 2 | Ceiling Fan | \$ 210 | \$ 420 |
| 0 | Outlet w/ USB Port in Bunk | \$ 98 | \$ - |
| 0 | Shelf w/ USB Outlet in Bunk | \$ 175 | \$ - |
| 0 | Extra Interior Outlet centered between Sofas | \$ 105 | \$ - |
| 1 | Outlet w/ USB Port in Bunk | \$ 105 | \$ 105 |
| 0 | Door Activated Light in Tall Cabinet | \$ 70 | \$ - |
| 0 | Extra Coat Hooks on Entry Way Wall | \$ 28 | \$ - |
| 0 | Match Slide-Out Ceiling Padded Material to Walls | \$ 175 | \$ - |
| 0 | Beveled Mirror- N/A all Floor Plans | \$ 560 | \$ - |
| 0 | Privacy Curtains for Bunk | \$ 420 | \$ - |
| 0 | Beadboard Wainscoting | \$ 490 | \$ - |
| 0 | Extra 110v Outlet- Interior | \$ 105 | \$ - |
| 0 | Bedliner in Stepwell | \$ 315 | \$ - |
| | Furniture | \$ - | \$ - |
| 1 | UltraLeather Seat Fabric Package- STD | \$ - | \$ - |
| 1 | Mini-King (Olympic Queen) Bed 66 x 80 w/ Memory Foam Mattress- STD | \$ - | \$ - |
| 1 | Dream Dinette Feature- STD | \$ - | \$ - |
| 1 | Bunk Mat- STD | \$ - | \$ - |

2021 Renegade Classic Motorhome Customer Prices

| Qty. | Description | Price | Extension |
|------|---|----------|-----------|
| 1 | UltraLeather Captains Chairs w/Adjustable Arms in Cab- STD | \$ - | \$ - |
| 0 | King Size (72x80) Bed IPO Olympic Queen (N/A All Models) | \$ 700 | \$ - |
| 1 | Queen Bed 50 x 80 IPO Mini-King | \$ - | \$ - |
| 0 | Free Standing Dinette w/ 4 Chair & Storage Credenza | \$ 1,680 | \$ - |
| 0 | (2) Recliners Swivel Rocker (Model 283) IPO Sofa | \$ 1,253 | \$ - |
| 1 | Theater Seating- Motorized IPO Sofa | \$ 1,253 | \$ 1,253 |
| 0 | Hide-a-Bed Sofa ILO Easy Bed | \$ 833 | \$ - |
| 0 | Hide-a-Bed Sofa | \$ 2,100 | \$ - |
| 0 | Ottoman w/Storage | \$ 420 | \$ - |
| 0 | (2) Villa Euro Recliners IPO Sofa | \$ 1,120 | \$ - |
| 0 | Re-Cover Factory Cab Seats | \$ 6 | \$ - |
| 0 | Villa Euro Recliner | \$ 1,330 | \$ - |
| 0 | (2) Villa Euro Recliners ILO Easy Bed | \$ 1,610 | \$ - |
| 0 | Solid Surface Table w/Flush Mounted Holders | \$ 490 | \$ - |
| 0 | Beveled Mirror on Wall | \$ 560 | \$ - |
| 0 | Fireplace in Cabinet | \$ 553 | \$ - |
| | Cabinets & Stain | \$ - | \$ - |
| 1 | Maple Cabinets- STD | \$ - | \$ - |
| 1 | Dove Tailed Drawers- STD | \$ - | \$ - |
| 1 | Stacked Silverware Drawer- STD | \$ - | \$ - |
| 1 | Maple Framed Mirror in Hallway or Bedroom (varies by model)- STD | \$ - | \$ - |
| 1 | Glass Control Panel Cover- STD | \$ - | \$ - |
| 1 | Pull-Out Pantry- STD | \$ - | \$ - |
| 1 | Self Closing Drawer Slides- STD | \$ - | \$ - |
| 1 | Residential Style Finish Drawers- STD | \$ - | \$ - |
| 1 | Optional Motorhome Cabinet Stain | \$ 1,575 | \$ 1,575 |
| 0 | Epic Slab Style Cabinet Doors | \$ 833 | \$ - |
| 0 | HG905S Cabinet Finish (Includes Wainscoting) | \$ 7,350 | \$ - |
| 0 | HG905S Cabinet Finish (No Wainscoting) | \$ 5,950 | \$ - |
| 0 | Upgrade Cherry Cabinets: Natural | \$ 9,450 | \$ - |
| 0 | Cabinet in the Bunk | \$ 770 | \$ - |
| 0 | Optional Cabinet Door Design | \$ 1,484 | \$ - |
| 0 | Upgrade Select Hickory Cabinets: Natural | \$ 9,975 | \$ - |
| 0 | Slide Out Kitchen Base | \$ 1,190 | \$ - |
| 0 | Tall Item Drawer Under Cooktop | \$ 210 | \$ - |
| 1 | Small Item Drawer Under Cooktop | \$ 210 | \$ 210 |
| 0 | Glass Door on Cabinet | \$ 70 | \$ - |
| 1 | Add Drawers to Bathroom Vanity | \$ 420 | \$ 420 |
| 1 | Hidden Compartment in Forward Nightstand- False Floor | \$ 70 | \$ 70 |
| | Flooring | \$ - | \$ - |
| 1 | Carpeted Floor Mats (2) in Cab & Runner for Living Area- STD | \$ - | \$ - |
| 1 | Matching Carpet in Cab & Living Area- STD | \$ - | \$ - |
| 1 | Vinyl floor in living room, galley, hallway and bath areas, carpet in bedroom | \$ - | \$ - |
| 28 | Porcelain Tile (per foot) | \$ 175 | \$ 4,900 |
| 0 | Polished Porcelain Tile (per foot) | \$ 210 | \$ - |
| 0 | Heated Tile, Per Lineal Foot | \$ 175 | \$ - |
| 0 | Tiled Wainscoting in Bathroom | \$ 490 | \$ - |
| 0 | Extra Carpet Runner | \$ 35 | \$ - |

2021 Renegade Classic Motorhome Customer Prices

| Qty. | Description | Price | Extension |
|-----------------------------------|---|----------|-----------|
| Countertops: Solid Surface | | \$ - | \$ - |
| 1 | High Polished Solid Surface countertops- STD | \$ - | \$ - |
| 1 | Decorative tile backsplash in all galley areas- STD | \$ - | \$ - |
| 0 | Color Changing LED Light- Counter top Edges & Toe Kicks | \$ 973 | \$ - |
| 0 | Granite Countertops (PER QUOTE) | \$ 8,393 | \$ - |
| 0 | Corian Countertops Upgrade- Non-Standard Material Charge Applies | \$ 1,953 | \$ - |
| 0 | Quartz Countertops Upgrade- Non-Standard Material Charge Applies | \$ 8,393 | \$ - |
| 0 | Bright Stainless Backsplash | \$ 490 | \$ - |
| Appliances | | \$ - | \$ - |
| 1 | Samsung Stainless Steel OTR Convection Microwave- STD | \$ - | \$ - |
| 1 | Samsung 18 cu ft Residential French Door Refer w/ Ice- STD | \$ - | \$ - |
| 1 | Recessed SS LP Cooktop w/ Removable Solid Surface Covers- STD | \$ - | \$ - |
| 1 | Outside Refrigerator Prep- 12V/110V wiring only, no slide tray- STD | \$ - | \$ - |
| 0 | 13 cu ft Elite 4 door RV Refrigerator w/ Ice & Water | \$ 2,163 | \$ - |
| 0 | 13 cu ft Elite 4 door RV Refrigerator NO Ice & Water | \$ 1,743 | \$ - |
| 0 | Outside Refrigerator/Freezer on Slide Tray | \$ 2,240 | \$ - |
| 0 | 3 Burner w/ Oven SS (NA on all Models) | \$ 434 | \$ - |
| 1 | 2 Burner Induction Electric Cooktop | \$ 833 | \$ 833 |
| 0 | Washer & Dryer- Combo Unit | \$ 2,170 | \$ - |
| 1 | Washer & Dryer- Stack | \$ 2,170 | \$ 2,170 |
| 0 | Central Vacuum System- Basement Mounted | \$ 455 | \$ - |
| 0 | Weber 110v Electric Grille on Slide Tray | \$ 1,190 | \$ - |
| 0 | 2 Burner Electric Cooktop (w/o Knobs) | \$ 1,190 | \$ - |
| 0 | Recessed Gas Cooktop (Corian only) | \$ 455 | \$ - |
| 0 | Dyson V6 Vacuum System | \$ 651 | \$ - |
| 0 | Dishwasher Drawer | \$ 1,393 | \$ - |
| Water Systems | | | |
| 1 | Toilet- Macerator- Bone Color (Electric Flush)- STD | \$ - | \$ - |
| 1 | 150 Gallon Fresh Water Tank- STD | \$ - | \$ - |
| 1 | Single Lever Kitchen Faucet w/ Retractable Sprayer- STD | \$ - | \$ - |
| 1 | Waste Tank Flush- STD | \$ - | \$ - |
| 1 | Outside Spigot by Holding Tanks- STD | \$ - | \$ - |
| 1 | Water Management Bay- STD | \$ - | \$ - |
| 1 | (2) 75 Galon Holding Tanks- STD | \$ - | \$ - |
| 1 | (2) Holding Tank Heat Strips per Tank- STD | \$ - | \$ - |
| 1 | Variable Flow Water Pump- STD | \$ - | \$ - |
| 1 | Whole House Water Filter- STD | \$ - | \$ - |
| 1 | Double Bowl SS Kitchen Sink w/ Covers- STD | \$ - | \$ - |
| 1 | 10 Gallon LP/110V Water Heater- STD | \$ - | \$ - |
| 1 | One-Piece Fiberglass Shower- STD | \$ - | \$ - |
| 1 | Glass Shower Door- STD | \$ - | \$ - |
| 0 | Outside Spigot (one is standard) | \$ 210 | \$ - |
| 1 | Flo-Jet Macerator Sewage System | \$ 833 | \$ 833 |
| 0 | Solid Surface Shower w/ Accent | \$ 5,040 | \$ - |
| 0 | Extra Holding Tank- (Limited Availability) | \$ 490 | \$ - |
| 0 | Black Macerator Ceramic Toilet ILO Bone | \$ 490 | \$ - |
| 1 | Solid Surface Bath Sink ILO Standard | \$ 252 | \$ 252 |
| 1 | Single Bowl SS Kitchen Sink ILO Double Bowl | \$ - | \$ - |
| 0 | Truma Aquago Tankless Water Heater | \$ 952 | \$ - |
| 0 | Girard Tankless Water Heater | \$ 210 | \$ - |

2021 Renegade Classic Motorhome Customer Prices

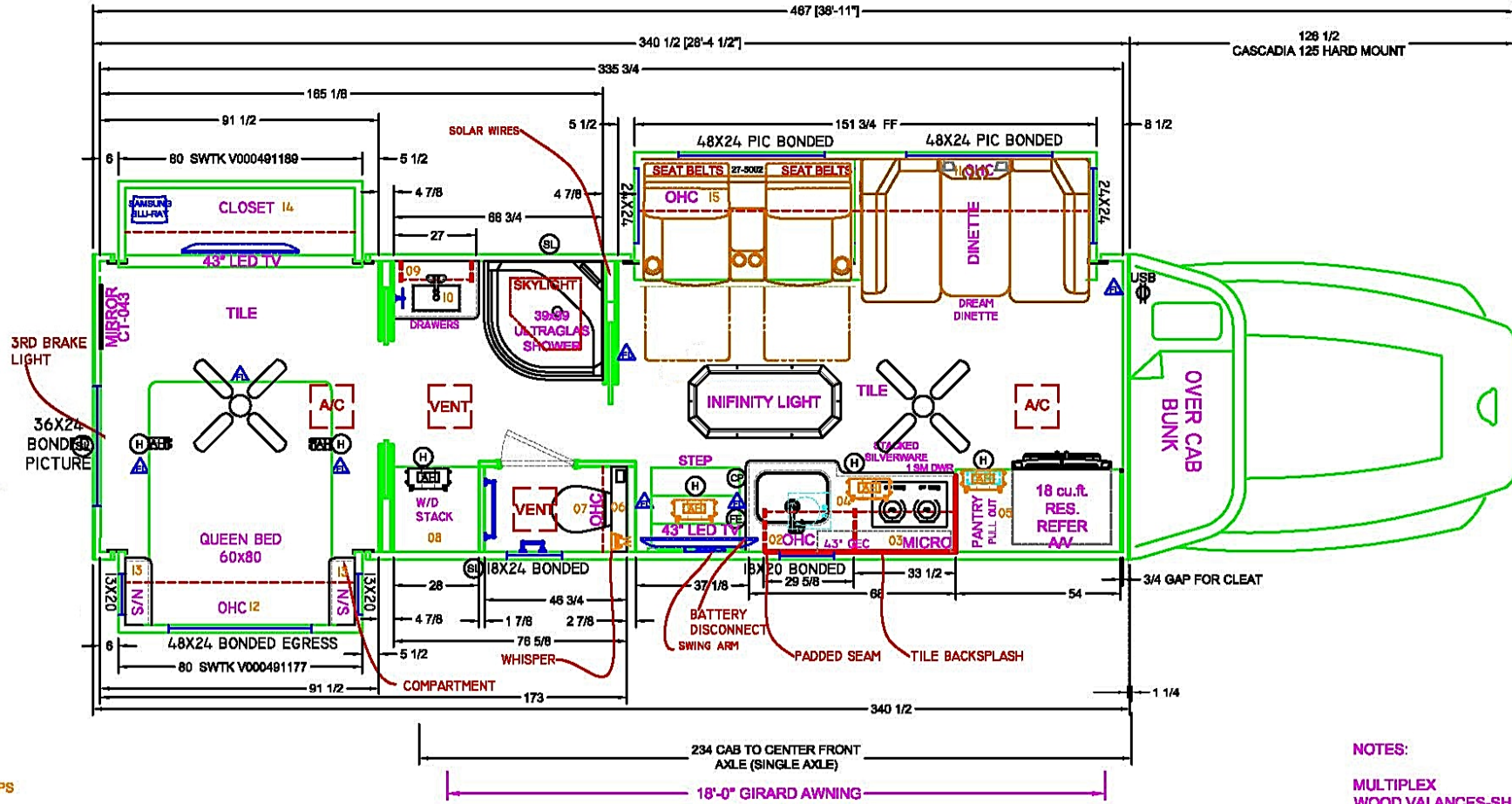
| Qty. | Description | Price | Extension |
|------|--|----------|-----------|
| 1 | Power Fresh Water Hose Reel | \$ 553 | \$ 553 |
| 0 | Outside Shower | \$ 245 | \$ - |
| 0 | Spray Away Outside Hose | \$ 154 | \$ - |
| 0 | 2nd Lav Sink | \$ 315 | \$ - |
| 0 | Extra Drawers Added to Bathroom Vanity | \$ 210 | \$ - |
| 0 | Bigger Bathroom w/ Two Sinks | \$ 1,680 | \$ - |
| 0 | Convert Half Bath to Full Bath | \$ 1,260 | \$ - |
| 0 | Add Second Full Bath to Single Bath Floorplan (Includes: Shower, Macerator Toilet, Lav, Cabinets, Vountertop) | \$ 5,453 | \$ - |
| 0 | Add Half Bath to Single Bath Floorplan (Includes: Toilet, Lav, Cabinets, Vountertop) | \$ 4,193 | \$ - |
| 0 | Extra 100 Gallon Fresh water tank w/variable flow pump in Storage box | \$ 1,050 | \$ - |
| | Mechanical Systems | \$ - | \$ - |
| 2 | 8-D AGM Batteries- (2 STD) | \$ - | \$ - |
| 1 | Surge Guard Protector w/ Monitor Panel- STD | \$ - | \$ - |
| 1 | Magnum 3000 Watt Hybrid Inverter w/ AGS- STD | \$ - | \$ - |
| 1 | Power Vent (2) w/ One Remote- STD | \$ - | \$ - |
| 1 | Pre-wire for up to 3 solar panels, 175 watts each- STD | \$ - | \$ - |
| 1 | Power Retractable Shore Cord Reel-STD | \$ - | \$ - |
| 2 | 15,000BTU Roof A/C with Heat Pumps (2ea 40' & under)- STD | \$ - | \$ - |
| 1 | 35,000 BTU Furnace w/Electronic Ignition- STD | \$ - | \$ - |
| 1 | Digital Wall Mounted Thermostat for Heating & Cooling- STD | \$ - | \$ - |
| 1 | 24.2gal LP Tank with Regulators & Gauge- STD | \$ - | \$ - |
| 0 | 12.5 kW Onan Quiet Diesel Generator- STD over 40' | \$ - | \$ - |
| 1 | 8 kW Onan Quiet Diesel Generator- Coaches 40' & Under- STD | \$ - | \$ - |
| 1 | Generator Switch in Living Quarters & Bedroom | \$ - | \$ - |
| 1 | Automatic Power Transfer Switch- STD | \$ - | \$ - |
| 1 | Monitor System: LP, Batteries, Wtr & Hldng Tnks- STD | \$ - | \$ - |
| 1 | GFCI and Standard Receptacles Throughout- STD | \$ - | \$ - |
| 1 | 14" x 14" Remote Control Power Vent Fan in Bath & Living Quarters-STD | \$ - | \$ - |
| 1 | Fire Extinguisher; Carbon Monoxide, LP Gas & Smoke Detectors- STD | \$ - | \$ - |
| 1 | Solar Panel System- (3) 175 Watt Panels w/ Monitor | \$ 1,882 | \$ 1,882 |
| 0 | Lithium Battery Upgrade Package- (6) 100 Amp Hour Battle Born Batteries, Battery Monitor, Battery Heaters, Battery Isolation Manager, Battery Guard Auto-Select | \$ 9,184 | \$ - |
| 1 | Additional 8D Battery | \$ 1,050 | \$ 1,050 |
| 0 | Additional Vent Fan Remote | \$ 35 | \$ - |
| 0 | Power Vent (2 Standard) w/ 1 Remote | \$ 413 | \$ - |
| 0 | Larger LP Tank (50 Gallon) | \$ 455 | \$ - |
| 1 | Remote LP between Frame Rails- 38 Gallons (very limited models) | \$ 1,050 | \$ 1,050 |
| 1 | AquaHot 450 Hydronic Heat and Hot Water w/ Engine PreHeat Includes One Water Management Box/ Sewage Bay Heater | \$ 9,800 | \$ 9,800 |
| 0 | Upgrade to Aquahot 600 Series | \$ 4,053 | \$ - |
| 1 | Fill with Propane | \$ 245 | \$ 245 |
| 1 | LP Quick Disconnect C/S | \$ 273 | \$ 273 |
| 0 | 12.5 kW Onan Quiet Diesel Generator- Coaches Under 40' | \$ 3,661 | \$ - |
| 0 | Gen-Turi Exhaust | \$ 490 | \$ - |
| 0 | Extra Magnum 3000 Watt Hybrid Inverter- Wired to Center A/C | \$ 3,213 | \$ - |
| 0 | Extra Generator Switch in Cab- N/A Multiplex Control | \$ 175 | \$ - |
| 0 | Extra Air Conditioner in Motorhome (Third) | \$ 1,484 | \$ - |
| 0 | Mount Hydraulic Jack Controls on Entry Wall | \$ 70 | \$ - |
| 2 | Deluxe Tinted MaxxAir Roof Vents ILO Standard Vents | \$ 105 | \$ 210 |

2021 Renegade Classic Motorhome Customer Prices

| Qty. | Description | Price | Extension |
|---|--|--------------------|------------|
| Electronics | | | |
| 1 | Samsung Blu-Ray Player in Living Room- STD | \$ - | \$ - |
| 1 | Samsung Blu-Ray Player in Bedroom- STD | \$ - | \$ - |
| 1 | 360 Degree UHF/VHF TV Antenna w/ Power Amp- STD | \$ - | \$ - |
| 1 | 6.1" Screen Sat Ready Radio, GPS w/ RV Maps- STD Freightliner Only- (N/A All Chassis) | \$ - | \$ - |
| 1 | Side Bullet Cameras- STD | \$ - | \$ - |
| 1 | Back-Up Camera w/ Trailer Plug-STD (Run Through Radio- Freightliner) | \$ - | \$ - |
| 1 | Winegard Mission RT4035T In-Motion Satellite Dish- STD (Receivers not included) | \$ - | \$ - |
| 1 | Pre-Wire for Stationary HD Satellite System- STD | \$ - | \$ - |
| 1 | Samsung Soundbar w/ Bluetooth & Wireless Subwoofer- STD | \$ - | \$ - |
| 1 | Winegard Connect 4G2 WiFi & 4G LTE Range Extender- STD | \$ - | \$ - |
| 1 | Back-Up Monitor & Camera (Truck Only) STD | \$ - | \$ - |
| 1 | Cable TV Hook-Up- STD | \$ - | \$ - |
| 2 | 40/43" LED Smart TV in Place of Standard 32" LCD | \$ 693 | \$ 1,386 |
| 0 | Samsung 4K 50" LED TV Upgrade from Standard 32" LCD | \$ 1,253 | \$ - |
| 1 | In-Wall Outside Entertainment Center: 43" LED TV w/ Soundbar | \$ 2,653 | \$ 2,653 |
| 0 | Trav'ler SWM3 HD Stationary ILO In-Motion Satellite Dish- No Receivers | \$ 1,120 | \$ - |
| 1 | Trav'ler SWM3 HD Stationary & In-Motion Satellite Dish- No Receivers | \$ 3,493 | \$ 3,493 |
| 0 | Back-Up Upgrade to 3 Camera System | \$ 875 | \$ - |
| 0 | Flip Down 19" LCD TV w/ DVD in Bunk | \$ 910 | \$ - |
| 0 | Manual TV Slide (Bunk) | \$ 420 | \$ - |
| 0 | Powered Slide for TV at Bunk | \$ 700 | \$ - |
| 0 | (2) Outside Speakers & AM/FM/CD Player in Storage Comp. | \$ 630 | \$ - |
| 1 | Swing Arm for TV | \$ 175 | \$ 175 |
| 0 | Screen Mesh IPO Glass in A/V Cabinet | \$ 35 | \$ - |
| 0 | Cobra CB Radio | \$ 420 | \$ - |
| 0 | Cobra Handheld CB Radio | \$ 245 | \$ - |
| 0 | Back-Up Upgrade to 4 Camera System | \$ 1,421 | \$ - |
| 0 | 50" LED TV with a Lift Behind Sofa | \$ 2,653 | \$ - |
| 0 | Lift for TV | \$ 1,953 | \$ - |
| 1 | Do Not Run Camera thru GPS- Use Voyager Monitor | \$ 651 | \$ 651 |
| 0 | Extra Camera for Monitor | \$ 490 | \$ - |
| Misc., Custom & Dealer Installed Options | | | |
| 0 | Retail Factory Pick-up (M-Th before 1pm) | \$ - | \$ - |
| 1 | AA | | |
| 1 | Garmin RV1051 Display | \$ 1,289 | \$ 1,289 |
| 0 | | \$ - | \$ - |
| 0 | | \$ - | \$ - |
| MSRP | | \$ - | \$ 499,516 |
| Total Selling Price USED | | \$, +,) 00 | |

2021 Renegade Classic Motorhome Customer Prices

Cab Seating- UL Woodpecker
Sofa- UL Woodpecker
Dinette- UL Woodpecker
Carpet- Swiss Coffee
Décor- Waterfall
Tile Flooring- Carrara Paonazzo
Floor Tile Grout- Ivory
Padded Walls- Ander Natural
Countertops- Solid Surface- Ocean View
Vanity Sink- Solid Surface- Ocean View
Kitchen Backsplash- Sahara Mir
Kitchen Backsplash- Grout- Ivory
Kitchen Sink- Stainless Steel
Cabinets & Trim- Standard Maple- Woodstock
Shower- Riverstone
Ceiling- White
Toilet- Bone
Interior Hardware Color: Satin Nickel
Awning Hardware- Black w/ Black Fabric
Slide Topper Awning Hardware- White w/ Black Fabric
Ceiling Fan- White/White



- 00 - COUNTERTOPS
- 01 - DELETED
- 15 - VALANCES
- 16 - STACKED SILVERWARE DRAWER
- 17 - AQUAHOT COVERS

NOTES:
 MULTIPLEX
 WOOD VALANCES-SHIP DECOR TOPS LOOSE

| REV | REVISION TABLE | DATE | BY | UNLESS SPECIFIED ALL DIMENSIONS ARE IN INCHES | DEALER | WESTSIDE | UNIT # | K01-3314 |
|-----|----------------|------|----|---|----------|-----------|-----------|-----------|
| | | | | | DRAWN BY | JF | MODEL | 38 CSB XM |
| | | | | | DATE | 10/1/2020 | DRAWING | FLOORPLAN |
| | | | | | | | DRAWING # | - |
| | | | | SHEET | | | 1 OF 1 | |
| | | | | | | | REV | - |

TOLERANCES
 FRACTIONAL: ± 1/16
 ANGULAR: ± 1 degree
 TWO PLACE DECIMAL: ± .010

DO NOT SCALE DRAWING

THIS DRAWING AND ITS CONTENTS ARE THE PROPERTY OF RENEGADE / KIBBI LLC AND ARE NOT TO BE COPIED OR REPRINTED WITHOUT CONSENT.







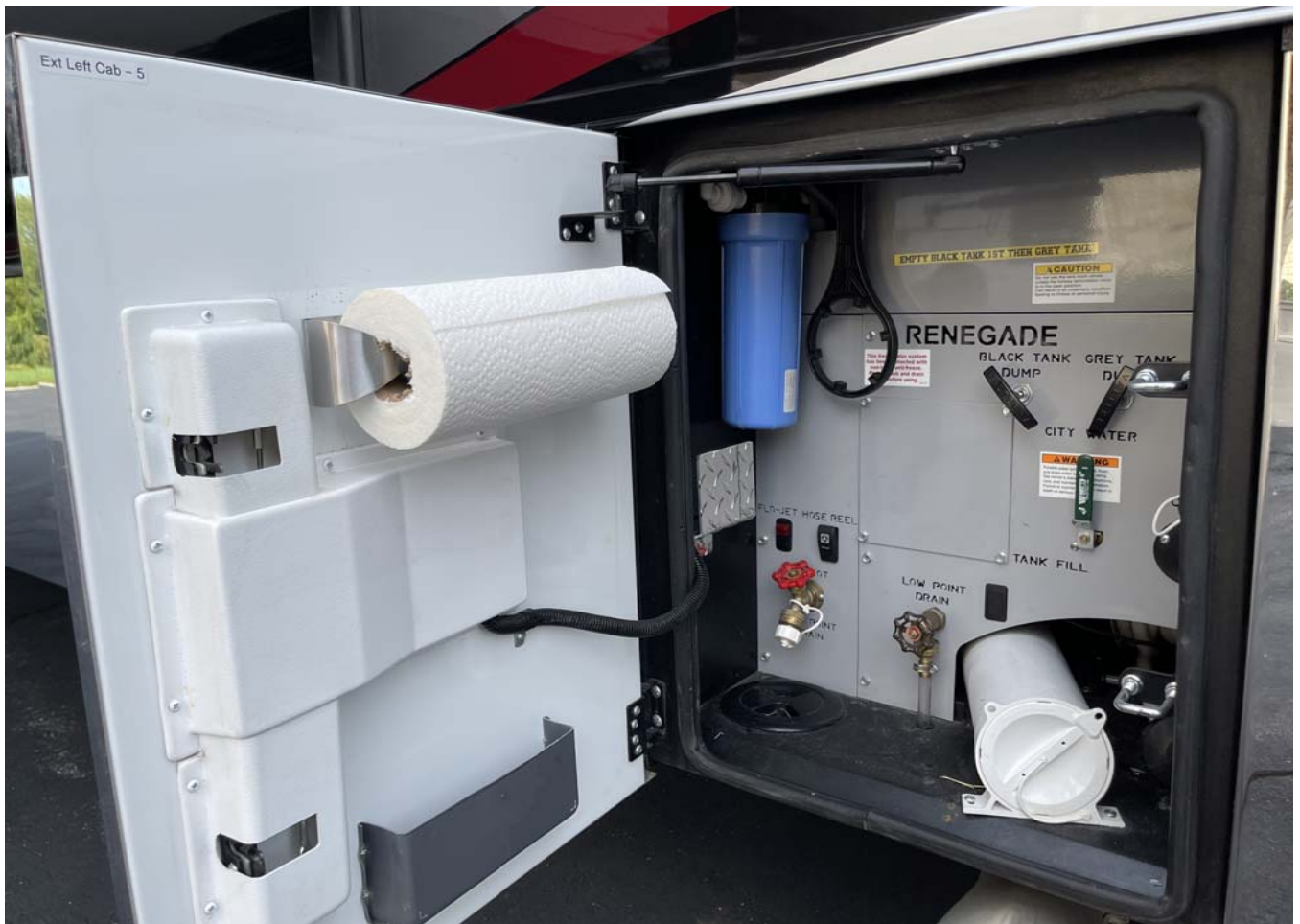












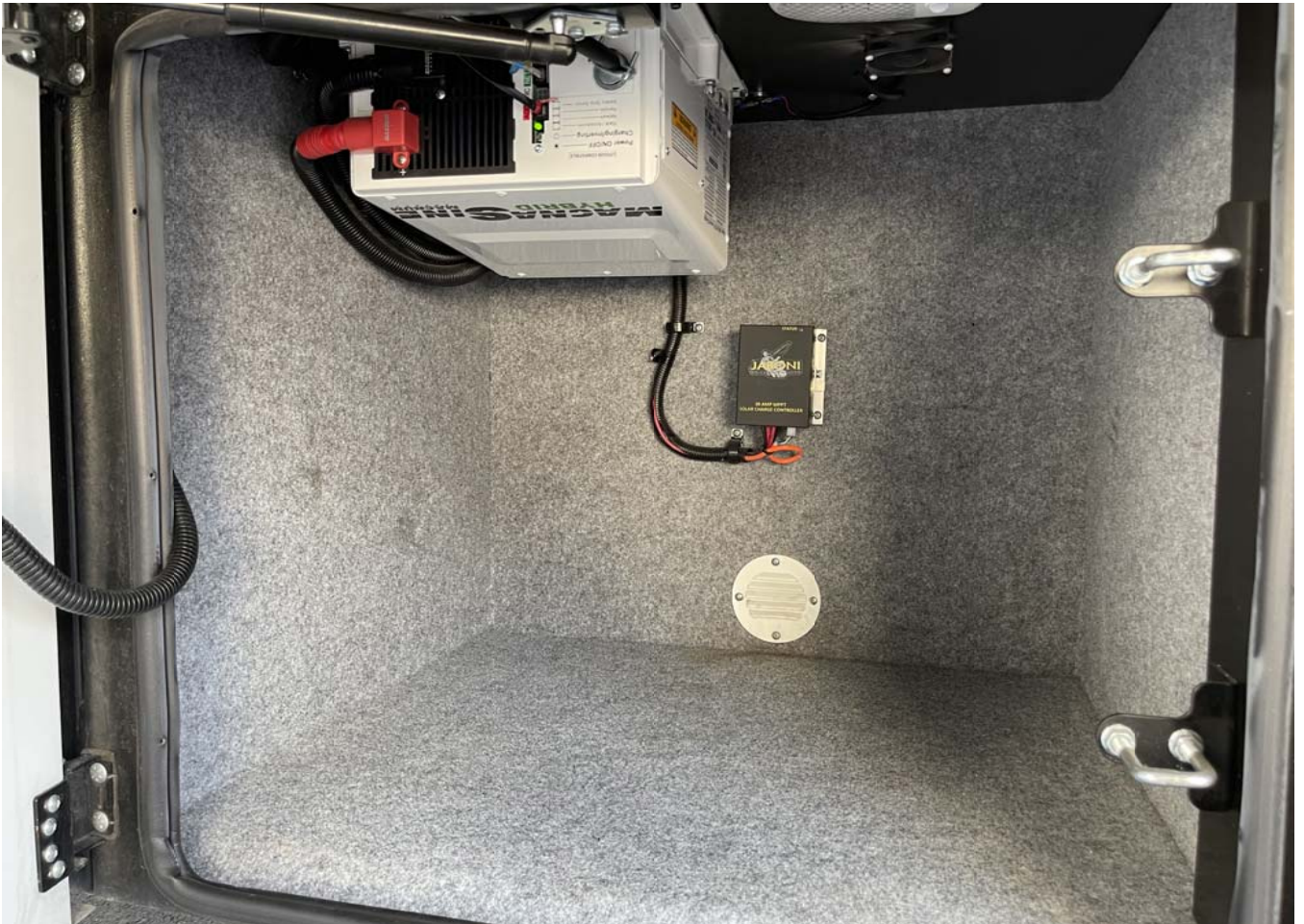


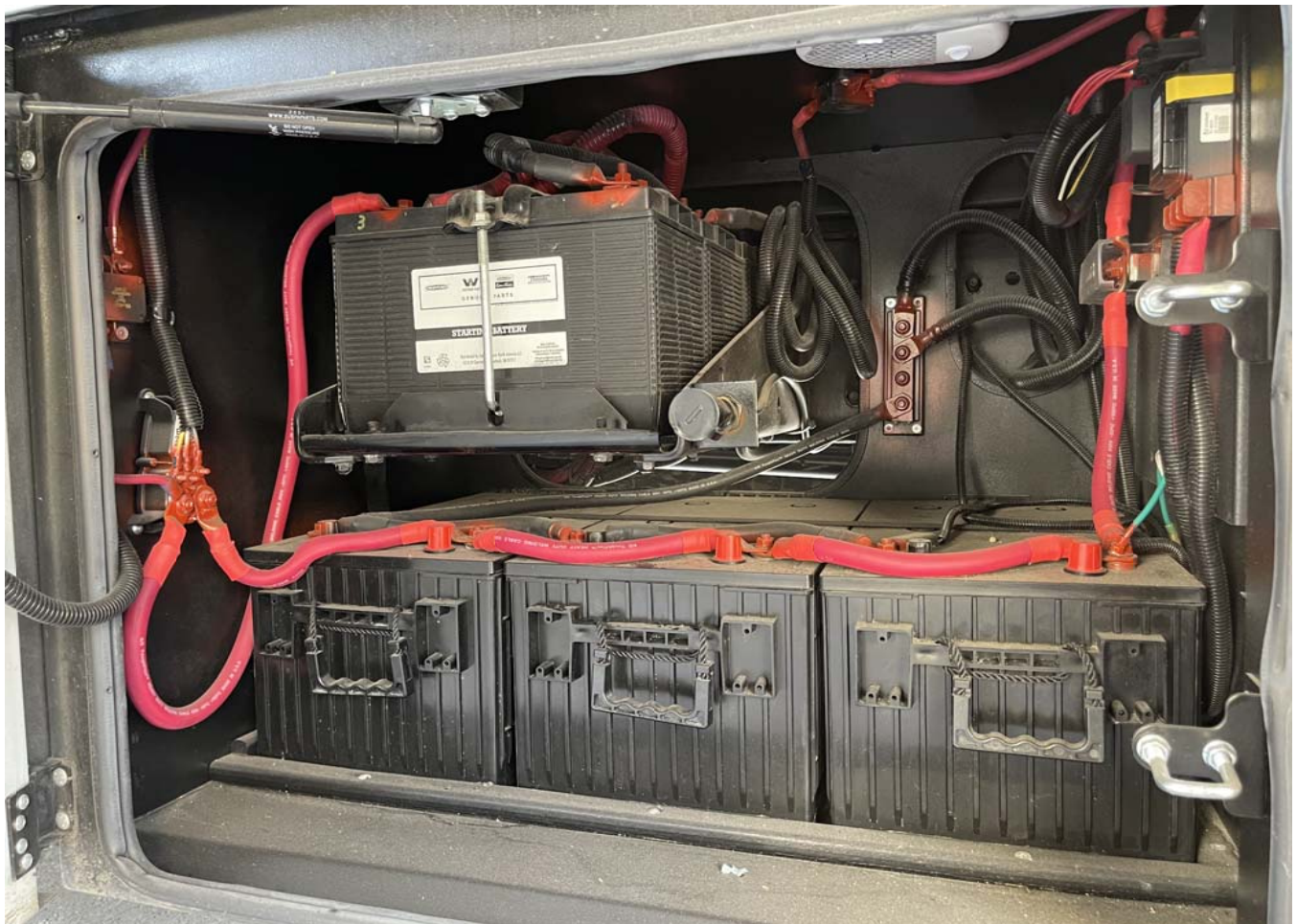












































**CAUTION !!!
HD Satellite
EXTENDED**

- 1. Always Unplug Receiver for Antenna Work
 - 2. Always Unplug Receiver for Antenna Work
- CAUTIONS**
- 1. Satellite receiver will operate on power from 12VDC
 - 2. Satellite receiver must have view of the Sky for signal reception
 - 3. ALWAYS Place this tag on deck for safety instruction before departure

Satellite Box

SONY DVD Player

Winegard Receiver

WINEGARD HD Satellite Receiver
12V DC POWER BY MOTOR

ANT 12VDC
WELL 12VDC

WESTSIDE
MOTORCOACH.COM
Westside Motorcoach
11001 S. Grant Hwy - Bk. 30
Mesa, AZ 85152
(480) 941-2372
www.westside-motorcoach.com















