

**WESTSIDE
MOTORCOACH**

westsidemotorcoach.com
(815) 529-2647



Renegade
RV

CLASSIC

THE RENEGADE CLASSIC LETS YOU TURN YOUR DREAMS INTO REALITY. WITH THE CLASSIC'S VERSATILE OPTIONS, YOU CAN CHOOSE FROM MULTIPLE FLOOR PLANS, DECOR OPTIONS, INSULATION APPLICATIONS AND MULTIPLE CHASSIS OFFERINGS. THESE ARE JUST A FEW OF THE UNIQUE FEATURES THE CLASSIC HAS TO OFFER.



Featured here is the 45CBF in the Summit decor. Cabinetry is finished with the Cape Cod stain and Epic style doors.





DECORS



SUMMIT

RIDGELINE



ASCENT

INTERIOR OPTIONS

CABINETS



**BURNISHED
SABLE**



ROCKPORT



LAKEWOOD



CAPE COD

BACKSPLASH



**STONE PROJECT
BLACK**



**STONE TALK
WHITE**



**DIA 04G
GLOSS GREY**



**PICK 09G
GLOSS TAUPE**

FLOORING



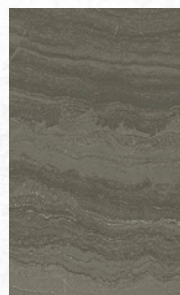
**NATURAL
GREY**



**BERNINI
CAMO**



**DURBAN
WHITE**



**DARK
GREIGE**

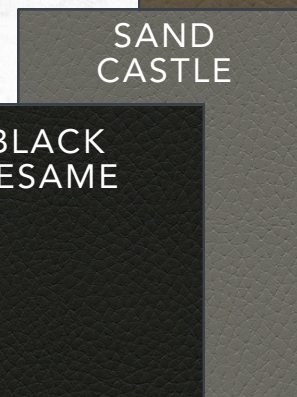
FURNITURE COLORS



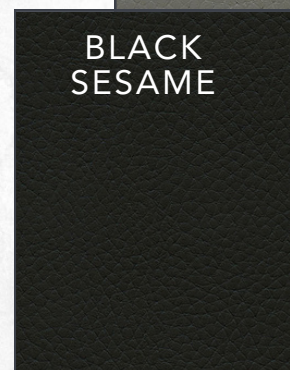
**RICE
PAPER**



**DESERT
DUNE**



**SAND
CASTLE**



**BLACK
SESAME**

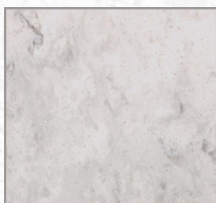
COUNTERTOPS



SANREMO



**SHADOW
CONCRETE**



**AURORA
CLOUD**



**AURORA
CREAM**

AT A GLANCE



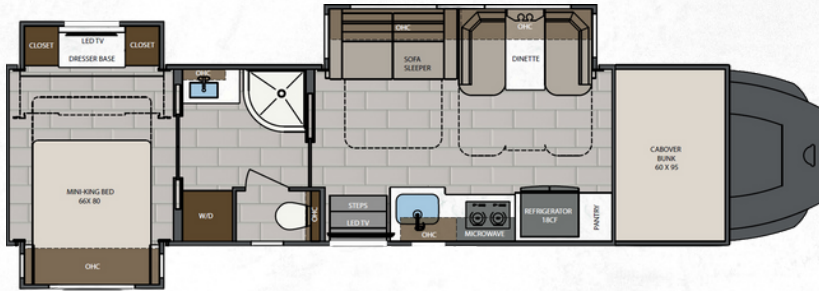
EXTERIOR HEIGHT	13' 6"
EXTERIOR WIDTH	100 1/4"
EXTERIOR LENGTH	38' - 45'
INTERIOR HEIGHT	90"
INTERIOR WIDTH	95 1/4"
FUEL CAPACITY	120 GALLONS
FRESH WATER CAPACITY	150 GALLONS
GREY WATER CAPACITY	75 GALLONS
BLACK WATER CAPACITY	75 GALLONS

KEY FEATURES

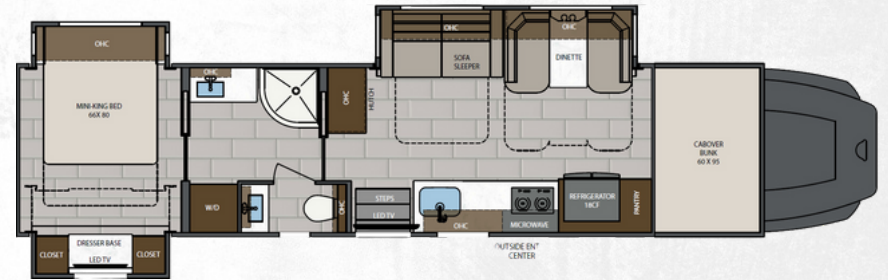
- 16 STANDARD FLOORPLAN SELECTIONS WITH VARIOUS CONFIGURABLE FLOORPLAN LAYOUT OPTIONS
- UP TO 30,000 LBS TOWING CAPACITY
- ROOF MOUNTED LATERAL ARM AWNING WITH LED LIGHTS
- MULTIPLEX SYSTEM WITH COLOR TOUCH PANEL & BLUETOOTH APP CONTROL
- SOLID HARDWOOD CABINETS & SOLID SURFACE COUNTERTOPS
- 3000W TRUE SINE WAVE INVERTER

CLASSIC

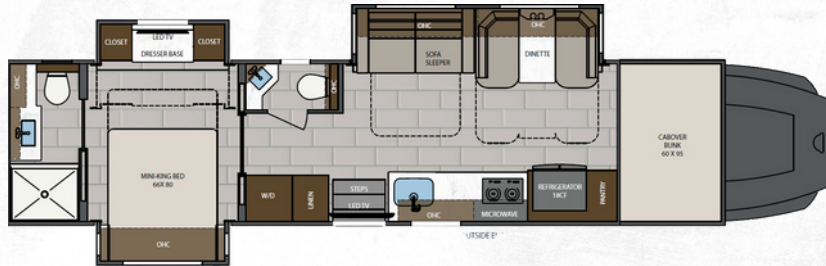
TRUCK FLOORPLANS



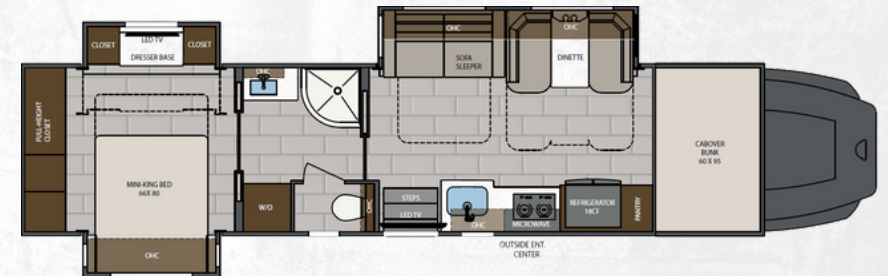
38CSB | 38' MID BATH, 3 SLIDES



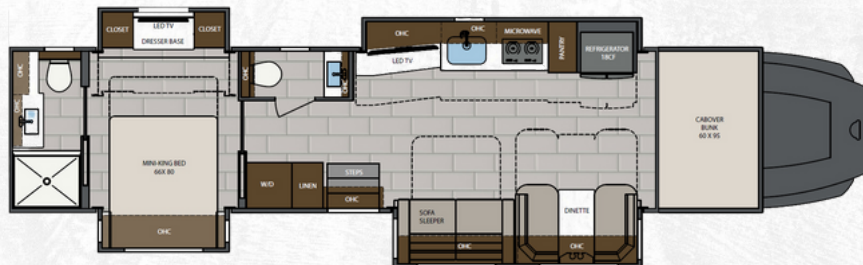
41CMB | 41' MID BATH, 3 SLIDES



41CRB | 41' MID AND REAR BATH, 3 SLIDES



41CRW | 41' MID BATH, REAR CLOSET, 3 SLIDES



43CMD | 43' MID AND REAR BATH, 4 SLIDES

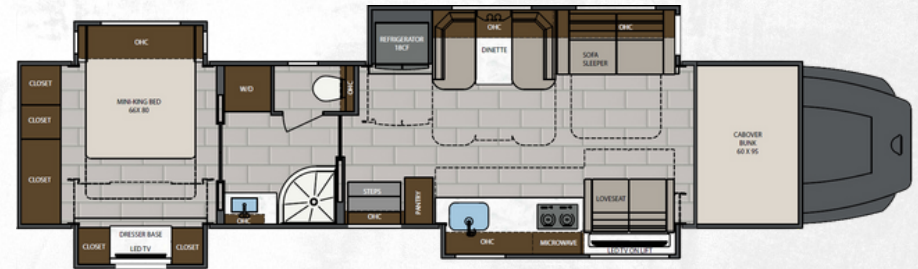
EACH FLOORPLAN HAS MULTIPLE, PRE-DESIGNED LAYOUT VARIATIONS AVAILABLE. PLEASE SEE ANY AUTHORIZED CLASSIC DEALER FOR DETAILS

CLASSIC

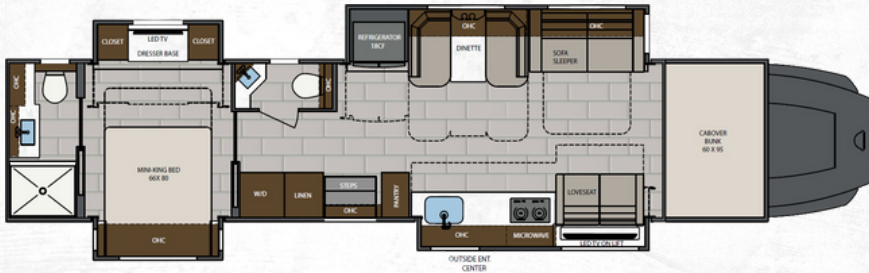
TRUCK FLOORPLANS



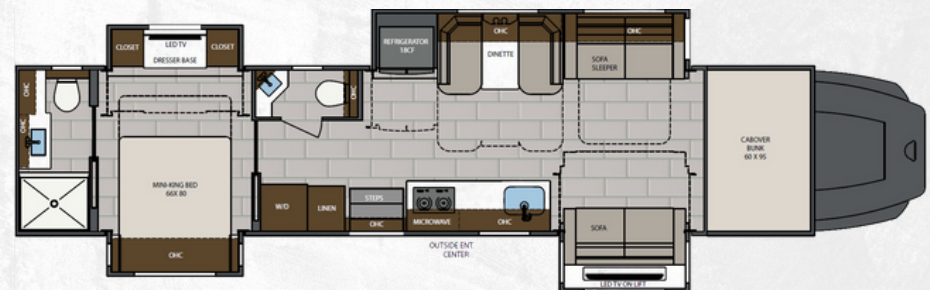
45CBF | 45' BATH AND A HALF, BUNK BEDS, 3 SLIDES



45CRS | 45' MID BATH, REAR CLOSET, 4 SLIDES



45CMR | 45' MID AND REAR BATH, 4 SLIDES



45CME | 45' MID AND REAR BATH, 4 SLIDES

EACH FLOORPLAN HAS MULTIPLE, PRE-DESIGNED LAYOUT VARIATIONS AVAILABLE. PLEASE SEE ANY AUTHORIZED CLASSIC DEALER FOR DETAILS

CLASSIC

GARAGE AND TOTOR FLOORPLANS**



2509GS GARAGE | MID BATH, 4 SLIDES



CS120 TOTOR | BATH, 2 SLIDES



2509 GARAGE | MID BATH, 3 SLIDES



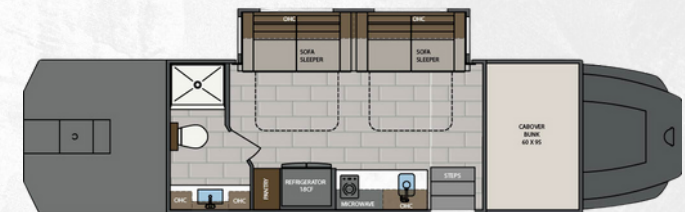
CS140 TOTOR | BATH, 2 SLIDES



2609 GARAGE | MID BATH, 3 SLIDES



CS150 TOTOR | BATH, 2 SLIDES



CS170 TOTOR | REAR BATH, 1 SLIDE

CAB/CHASSIS

- FREIGHTLINER® CASCADIA®, VOLVO® VNR/VNL, WESTERN STAR®, AND PETERBILT® CHASSIS WITH PRODUCT SPECIFIC ENGINE AND TRANSMISSION OPTIONS AND SPECIFICATIONS AVAILABLE
- 20,000 LB. HITCH, 7-WAY TOW CONNECTOR WITH 2" INSERT (SINGLE AXLE)
- 30,000 LB. HITCH, 7-WAY TOW CONNECTOR WITH 2" AND 2 5/16" FLIP BALL RECEIVER, 2" INSERT, AND PINTLE LOCK (TANDEM AXLE)
- POLISHED ALUMINUM WHEELS WITH CENTER CAPS
- REAR AIR SUSPENSION
- PREMIUM TOUCH SCREEN DASH RADIO WITH BLUETOOTH AND INTEGRATED COLOR MONITOR (CHASSIS SPECIFIC)
- COLOR REAR AND SIDE VIEW CAMERAS
- UPGRADED CAB SOUND SYSTEM (CHASSIS SPECIFIC)
- PREMIUM SOUND AND THERMAL INSULATION PACKAGE
- LED HEADLIGHT WITH BUMPER INTEGRATED FOG LIGHTS (CHASSIS SPECIFIC)
- POWER WINDOWS AND DOOR LOCKS
- POWER/HEATED REMOTE-CONTROL MIRRORS
- AIR RIDE DRIVER AND PASSENGER SEAT PEDESTALS WITH SWIVELS (CHASSIS SPECIFIC)
- SOFT TOUCH DRIVER/PASSENGER SEATS WITH ARMRESTS
- AUXILIARY AIR CHUCK AND HOSE

EXTERIOR

- FRP CABOVER FRONT WITH 60" CAB BUNK
- FOUR-POINT HYDRAULIC LEVELING SYSTEM WITH APP
- LIGHTED EXTERIOR ENTRY DOOR ASSIST HANDLE
- KEYLESS ENTRY
- POWERED FOLDING DOUBLE ENTRY STEPS
- UNPAINTED (WHITE) EXTERIOR
- ROOF MOUNTED GIRARD® 2-STAGE LATERAL ARM AWNING WITH LED LIGHTS AND END CAPS
- SLIDE TOPPERS
- FRAMELESS DUAL PANE TINTED WINDOWS WITH SCREENS
- POWER LOCKING, SIDE-SWING ALUMINUM COMPARTMENT DOORS WITH SINGLE HANDLE PADDLE LATCHES AND DOUBLE CATCH
- STEEL STORAGE COMPARTMENTS WITH CARPETED LINING
- FULL-WIDTH ROCK GUARD MUDFLAP

CONSTRUCTION

- 5/8" FRP ROOF AND EXTERIOR WALLS (2 3/8" TOTAL WALL THICKNESS)
- 1.5" HIGH DENSITY FOAM INSULATION IN SIDEWALLS AND ROOF
- "SUPER SANDWICH" FLOOR CONSTRUCTION WITH COMPOSITE UNDERBELLY INCLUDES:
 - 2" WELDED STEEL FLOOR JOIST SYSTEM MOUNTED TO 6" STEEL LONGITUDINAL FLOOR BEAMS
 - 3/4" FIR PLYWOOD DECK OVER 2 X 4 WOOD-FRAMED RESIDENTIAL FLOOR WITH THERMAL AND SOUND DEADENING INSULATION

BATH

- MAPLE HARDWOOD VANITY, MEDICINE AND LINEN STORAGE CABINETS
- LED VANITY LIGHT
- DELUXE SATIN NICKEL BATH FAUCET AND ADJUSTABLE SHOWER HEAD
- SATIN NICKEL TOWEL BAR, TOWEL RING, AND TP HOLDER
- PORCELAIN MACERATOR TOILET WITH PUSH BUTTON FLUSH
- SOLID SURFACE COUNTERTOP WITH INTEGRATED SINK
- SOLID SURFACE SHOWER WITH WALL TILE INLAY, AND SLIDING GLASS DOOR

INTERIOR

- (3) INTERIOR DECOR OPTIONS
- DECOR COORDINATING WOOD VALANCES WITH FABRIC INSERTS
- DOUBLE ROLLER DAY/NIGHT SHADES (MANUAL)
- DECORATIVE WALLBOARD WITH COORDINATING ACCENT IN SLIDE OUTS
- 12"X24" PORCELAIN TILE FLOORING THROUGHOUT
- MAPLE HARDWOOD CABINETRY
- 4-WOOD STAIN COLOR OPTIONS, 2-FINISH OPTIONS
- DOVETAIL DRAWERS ON SOFT CLOSING SLIDES
- FRAMED DOORS ON HIDDEN HINGES
- PANTRY WITH HIDDEN DRAWERS
- HARDWOOD SLIDE FASCIA
- SATIN NICKEL DOOR HARDWARE
- SATIN NICKEL KITCHEN FAUCET
- SOLID SURFACE COUNTERTOPS THROUGHOUT
- RECTANGULAR SINGLE BOWL UNDERMOUNT KITCHEN SINK WITH COVER
- ACCENT LIGHTING AT TOE KICKS
- GROUTED TILE BACKSPLASH
- LED LIGHTING
- MEMORY FOAM MATTRESS
- ULTRALEATHER® FURNITURE UPHOLSTERY
- CONVERTIBLE BOOTH DINETTE WITH STORAGE
- SOFA SLEEPER, HIDE-A-BED
- LOVESEAT WITH STORAGE (SELECT FLOORPLANS)

APPLIANCES

- 18 CU. FT. FRENCH DOOR RESIDENTIAL REFER WITH STAINLESS STEEL DOORS
- FLUSH MOUNT 2-BURNER INDUCTION COOKTOP
- 1.7 CU. FT. STAINLESS STEEL CONVECTION MICROWAVE OVEN
- AQUA-HOT® 450D HYDRONIC WATER AND ZONE HEATING SYSTEM
- (2 OR 3) 15,000 BTU ROOF A/C WITH HEAT PUMPS AND PLUMBED CONDENSATION LINES (VARIES BY FLOORPLAN/GEN SIZE)
- DUCTED AIR CONDITIONING
- MAXXAIR® DELUXE POWER VENTS
- PRE-WIRED AND PLUMBED FOR OPTIONAL WASHER/DRYER
- CARBON MONOXIDE, LP AND SMOKE DETECTORS, AND FIRE EXTINGUISHER

ENTERTAINMENT SYSTEM

- 43" OR 50" 4K SMART LED TV IN LIVING AREA (VARIES BY FLOORPLAN)
- SOUNDBAR HOME THEATER WITH BLUETOOTH STREAMING AND WIRELESS SUBWOOFER IN LIVING AREA
- 32" 4K SMART LED TV IN THE BEDROOM
- EXTERIOR ENTERTAINMENT CENTER
 - 43" SMART LED TV ON SWIVEL
 - SOUNDBAR WITH BLUETOOTH STREAMING
 - USB CHARGING
- WINEGARD® CONNECT 2.0 ROOFTOP OTA ANTENNA WITH WIFI AND 4G READY (SIM CARD REQ.)
- WINEGARD® IN-MOTION SATELLITE SYSTEM
- PREWIRE FOR WINEGARD® TRAV'LER STATIONARY HD SATELLITE SYSTEM

ELECTRICAL SYSTEMS

- 8KW ONAN® QUIET DIESEL GENERATOR (COACHES UNDER 40')
- 12.5KW ONAN® QUIET DIESEL GENERATOR (COACHES 40' AND OVER)
- AUTOMATIC GENERATOR START SYSTEM
- 50-AMP ELECTRICAL PANEL
- 3,000W TRUE SINE WAVE INVERTER
- TRANSFER SWITCH WITH SURGE PROTECTION
- (2) 330AH AGM HOUSE BATTERY
- SOLAR CHARGING SYSTEM PRE-WIRE
- MULTIPLEX CONTROL SYSTEM WITH BLUETOOTH APP CONTROL
- USB/USB-C CHARGING IN LIVING AREA, BEDROOM, KITCHEN AND BUNK AREAS
- 50-AMP POWER RETRACTABLE SHORE CORD REEL
- 12V HOLDING TANK HEATERS, GREY AND BLACK TANKS

PLUMBING

- 150 GALLON FRESH WATER TANK
- 75 GALLON GREY TANK
- 75 GALLON BLACK TANK
- SEE-LEVEL® TANK MONITORING SYSTEM
- FULL MAINTENANCE WET BAY
 - BLACK TANK FLUSH SYSTEM
 - CITY WATER HOOKUP WITH POWERED RETRACTABLE HOSE REEL
 - OUTSIDE FAUCET WITH SPRAYER
- ON DEMAND WATER PUMP
- WHOLE HOUSE WATER FILTRATION SYSTEM

POPULAR OPTIONS

- VARIOUS ALTERNATIVE FLOORPLAN LAYOUT CONFIGURATIONS (SEE DEALER FOR INFORMATION)
- UNDERBODY LED LIGHTING
- 3-TIER PAINT PERSONALIZATION PROGRAM
- SECOND LATERAL ARM AWNING (N/A ON 38CSB)
- EXTERIOR 12V SCENE LIGHTING-BRIGHT LED
- AERO CAP WITH WALKTHROUGH FEATURES (CASCADIA®, WESTERN STAR®)
- EXTERIOR REFER/FREEZER ON SLIDE TRAY (FLOORPLAN SPECIFIC)
- INSULATION UPGRADE
- SOFT TOUCH INTERIOR PADDED WALLS
- FLOOR HEAT THROUGHOUT
- WASHER AND DRYER STACK
- MOTORIZED TV SLIDE AT BUNK
- HIGH GLOSS CABINET FINISH
- MULTI-COLOR INTERIOR UNDERCOUNTER AND TOE KICK LED LIGHTING
- AQUA-HOT® 600D SYSTEM ILO AQUA-HOT® 450D
- (2) 270AH HIGH-CAPACITY LITHIUM BATTERIES ILO AGM BATTERIES
- ADDITIONAL 270AH HIGH-CAPACITY LITHIUM BATTERY (LIMIT 2)
- 600W SOLAR PANEL SYSTEM (3 @ 200W; EXPANDABLE)

***THE GARAGE AND TOWER FLOORPLANS HAVE THEIR OWN LIST OF STANDARDS AND OPTIONS THAT ARE SEPARATE FROM THE MOTORHOME STANDARDS AND OPTIONS LIST IN THIS BROCHURE. PLEASE SEE DEALER FOR DETAILS.*

**ALL FEATURES ARE SUBJECT TO CHANGE WITHOUT NOTICE OR OBLIGATION*

RENEGADE WARRANTY

RENEGADE MY2024 MOTORHOMES ARE COVERED BY A 1-YEAR UNLIMITED MILES LIMITED WARRANTY, PLUS A 3-YEAR 36,000-MILE LIMITED STRUCTURAL WARRANTY.

ALL RENEGADE MOTORHOME CHASSIS, ENGINES, TRANSMISSIONS, AND DRIVETRAIN WARRANTIES ARE PROVIDED AND ADMINISTERED BY THEIR RESPECTIVE MANUFACTURERS.

FOR SPECIFIC INFORMATION ABOUT THESE WARRANTIES, ASK YOUR DEALER OR CONTACT RENEGADE RV.



westsidemotorcoach.com
(815) 529-2647