



Estimate

Number

E532

Date

1/12/2021

Customer:

44' Pro Stock Bathroom
Duplicate of 190345
2022

Description	Price	Quantity	Total
44' Pro Stock Gooseneck Triple 6,000# Axles P844GT36	\$28,773.00		\$28,773.00
Bathroom - Pro Stock	\$3,942.00		\$3,942.00
12" Extra Height 44' (Pro Stock)	\$976.00		\$976.00
12" Extra Tall Ramp Door	\$0.00		\$0.00
Elite 5 Drawer Cabinet - Black	\$993.00		\$993.00
Pro Stock Bath 24" Cabinet Package *Black	\$302.00		\$302.00
Shelf in Overhead	\$44.00		\$44.00
AM/FM Stereo w/ CD Player	\$352.00		\$352.00
Exterior Speakers - Pair	\$93.00		\$93.00
36" x 30" Generator Door w/ Vent (Incl CO2 & Smoke Det)	\$248.00		\$248.00
60" Double Door ipo 48" (57-1/4" Opening)	\$308.00		\$308.00
110V Recept (interior)	\$27.00	2.00	\$54.00
110V GFI Recept	\$65.00		\$65.00
12V L.E.D. Loading Light	\$27.00	2.00	\$54.00
12V Wall Switch	\$16.00	2.00	\$32.00
3 Pairs of Angled Tail Lights - Must have Center Latch	\$193.00		\$193.00
LED Scene Light Large	\$394.00		\$394.00
LED Scene Light Large ipo Destin	\$310.00	2.00	\$620.00
36" Aluminum Ramp Door Flap w/ 3" Bumpers	\$345.00		\$345.00



Estimate

Customer:

44' Pro Stock Bathroom
Duplicate of 190345
2022

Number

E532

Date

1/12/2021

Description	Price	Quantity	Total
Indoor/Outdoor Carpet PMF	\$20.00	8.00	\$160.00
8' Beavertail	\$44.00		\$44.00
Heavy Duty Skid Wheels Pair	\$123.00		\$123.00
Mini Tapered Spread - Triple	\$554.00		\$554.00
D-Ring Floor - Installed	\$22.00	6.00	\$132.00
Step to GN Riser W/Carpet	\$140.00		\$140.00
.030 aluminum Smooth Side Interior Walls *Silverfrost	\$4.00	44.00	\$176.00
36" Indoor/Outdoor Carpet on Walls Pro Stock	\$12.00	36.00	\$432.00
Roof Vent - Wired & Framed for Air	\$81.00		\$81.00
Recessed Spare Tire Compartment w/ Hinged Lid	\$246.00		\$246.00
30" x 22" Radius Slider	\$194.00		\$194.00
30" X 22" Egress Picture Window	\$209.00		\$209.00
20' Latitude Awning (12V Power, LED Lights in Tube, Horizontal Support Tubes)	\$1,788.00		\$1,788.00
Side Door 6" Taller	\$31.00		\$31.00
Wide Ramp Door Opening (Pro Stock)	\$149.00		\$149.00
Material Surcharge to be added to all quoted Trailers and Retail Sold units welding after 2/7	\$2,957.00		\$2,957.00

Shipping Cost

\$0.00

Sub Total

\$45,204.00

Total

\$45,204.00

PRO STOCK STANDARD EQUIPMENT

Interior Height		6'6"
Interior Width		96"
Exterior Aluminum		.040" Smooth Side
Wheels		Goodyear Radials (Except G Tires) on Aluminum Wheels
Frame		Painted / Z-Tech Undercoating
Tag		2" x 6" Tube - 4 Foot Beavertail
Gooseneck		2"x 8" Tube - 4 Foot Beavertail
Torsion Axles		Dexter E-Z Lube Axles - All Wheel Electric Brakes
		82" Between Wheel Wells
Wall Construction		1" x 1 1/2" Steel Tube
16" Centers		Walls, Ceiling & Floor
Flooring		3/4" Plywood with Darco Moisture Barrier
		TPO Coin Flooring
Ceiling & Walls		White Vinyl Ceiling and Screwless .030" Aluminum Walls
Insulation		Ceiling
Side Door		48" with Flush Lock and Deadbolt - Piano Hinge
Side Door Construction		Aluminum Tube
Ramp Door		Spring Assist with Single Handle Recessed Latch
		ATP on Ramp Door
		16" Wide Aluminum Flap
		Brite Annodized Rear Hoop
Spring Cover		White Aluminum
Roof		1 Pc. Aluminum w Roof Vent Wired for A/C
Radius Corner		Polished Cast Aluminum Corners & Stainless Steel Cap
Clearance Lights		L.E.D.
Electrical		(4) 38" LED Flat Panel Lights w/ 1 Switch
		(2) Destin LED Scene Lights w/ 1 Switch
		(3) Interior Recepts. (1) GFI Recept
		45 amp Smart Charger, 30 amp Load center w/ Lifeline
Cabinets	Tag	L-Shape Workbench, 16" L-Shape Overhead & 24" Closet
	GN	L-Shape Workbench, 16" Straight Overhead & 24" Closet
Tail Lights		L.E.D. in Uprights & L.E.D. License Plate Light
Stoneguard		ATP Tag - ATP Gooseneck
Jack	GN	Single Hydraulic Jack with Battery (Goosneck Only)
Wheel Wells		Covered in ATP
Warranty		3 Year Factory Warranty



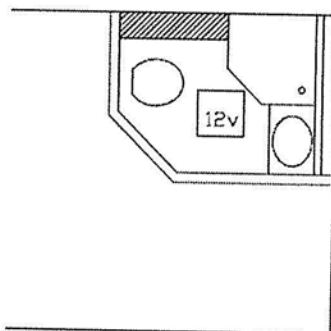
TRAILERS

Pro Stock Bathroom

(Only Available in Pro Stock Trailer)

Bathroom Includes:

- Separate Toilet, Corner Shower & Sink
- 6 gallon Electric Hot water Heater
- 51 Gallon Fresh Water Tank - Tag
- 60 Gallon Fresh Water Tank - Gooseneck
- 60 Gallon Grey Water Tank - Tag & Gooseneck
- 30 Gallon Black Tank - Tag & Gooseneck
- Tank Monitoring System
- 12V Dome Light
- 12V Roof Vent
- Towel Rack and Toilet Paper Holder
- Medicine Cabinet
- TPO Flooring in Bathroom
- All Aluminum Walls
- Aluminum Bathroom Door with Flush Lock and Deadbolt



4660 PINE CREEK ROAD • ELKHART, INDIANA 46516
574-522-2261 OR TOLL FREE 1-800-233-5455 • FAX: 574-522-2603













PLEASE DEADBOLT LOCK
WHEN TOWING TRAILER TO
PREVENT ACCIDENTAL DOOR
OPENING WHILE IN TRANSIT.



TIRE AND LOADING INFORMATION

VINTAGE TRAILERS, LTD
5BWUV4439K1000345

TIRE	SIZE	COLD TIRE PRESSURE	SEE OWNER'S MANUAL FOR ADDITIONAL INFORMATION FD-314
FRONT	235/80 16	552 kpa, 80 psi	
REAR	235/80 16	552 kpa, 80 psi	
SPARE	235/80 16	552 kpa, 80 psi	

MANUFACTURED BY:

VINTAGE TRAILERS, LTD.
4660 Pine Creek Road
Elkhart, IN 46516 * 1(574)522-2261

DATE: 05-19

GVWR 8165 KG(18000 LB)
GAWR ALL 2722 KG(6000 LB) PER AXLE WITH 235/80 TIRE 16 RIM
AT 552 KPA(80 PSI) COLD SINGLE

THIS VEHICLE CONFORMS TO ALL APPLICABLE US FEDERAL MOTOR VEHICLE SAFETY STANDARDS IN EFFECT ON
THE DATE OF MANUFACTURE SHOWN ABOVE.

VIN: 5BWUV4439K1000345

TYPE: TRAILER

MODEL: P844G-PS Bath

FD-304 REV A























