



# Estimate

Number

E586

Date

8/27/2021

Customer:

48' LQ 160 2022

Description	Price	Quantity	Total
48' Outlaw Gooseneck Triple 6,000# Axles OL848GT36	\$21,689.00		\$21,689.00
12' LQ Sofa (S) (Propane included w/ 8.0 Refer)(Gooseneck)	\$17,219.00		\$17,219.00
12" Extra Height 48'	\$976.00		\$976.00
12" Extra Height (RVT & LQ)	\$388.00		\$388.00
12" Extra Tall Ramp Door	\$0.00		\$0.00
Cabinet Package #1- Straight Workbench and 16" Overhead	\$1,005.00		\$1,005.00
Generator Compartment in Workbench	\$130.00		\$130.00
Heat Sheild in Generator Compartment	\$62.00		\$62.00
AM/FM Stereo w/ CD Player	\$352.00		\$352.00
TV Antenna	\$260.00		\$260.00
36" X 30" Generator Door w/ Vent (Incl CO2 & Smoke Det)	\$248.00		\$248.00
Double RV Step ipo Single GN Only	\$130.00		\$130.00
Side Door 6" Taller	\$31.00		\$31.00
110V GFI Recept	\$65.00	2.00	\$130.00
38" LED Panel Light ipo 4' Fluorescent	\$84.00	2.00	\$168.00
Cable Hatch (in floor)	\$23.00		\$23.00
Deluxe Light Package - 2- 4' Fluorescent Lights w/ Defuser, 2- 110V Recessed Quartz Lights, 2- 12V LED Loading Lights, 3- 12V LED Lights, 3 110V Recepts, 30 Amp load center w/lifeline	\$734.00		\$734.00
LED Scene Light Small ipo Recessed Quartz Light	\$93.00	2.00	\$186.00



# Estimate

Customer: [Redacted]  
48' LQ 160 2022

Number E586  
Date 8/27/2021

Description	Price	Quantity	Total
36" Aluminum Ramp Door Flap w/ 3" Bumpers	\$345.00		\$345.00
ATP Ramp & Flap (12" Extra Height)	\$386.00		\$386.00
TPO Coin Flooring	\$34.00	28.00	\$952.00
8' Beavertail	\$44.00		\$44.00
Frame for in Frame Fuel Tank	\$28.00		\$28.00
D-Ring Floor - Installed	\$22.00	4.00	\$88.00
13.5 BTU Air w/ Thermostat	\$881.00		\$881.00
Insulation - Ceiling PMF	\$6.00	28.00	\$168.00
Insulation - Side Walls (12" Extra Height) PMF	\$12.00	28.00	\$336.00
Roof Vent	\$49.00		\$49.00
Roof Vent - Wired & Framed for Air	\$81.00		\$81.00
235 R16 Aluminum w/ Goodyear ipo Sil Spoke	\$141.00	6.00	\$846.00
Material Surcharge to be added to all quoted Trailers and Retail Sold units welding after 2/7	\$9,587.00		\$9,587.00

Shipping Cost	\$0.00
Sub Total	\$57,522.00
<b>Total</b>	<b>\$57,522.00</b>



## Living Quarters (LQ)

5.11.20

### All LQ Living Quarters Floor Plans Come Standard with the Following Items:

Insulated Walls and Ceiling  
Decorator Board on Walls  
Vinyl Flooring  
Egress Window  
Mini Blinds and Valances  
Microwave  
Gas Package Standard in all Gooseneck LQ's (Optional in T ags)  
Range Cover (Gooseneck Only)  
Gas 8.0 Cu. Ft. Refrigerator (Except 12 SD Gooseneck and ALL TAGS)  
Pressurized Hot and Cold Water System with Tanks  
6 Gallon Gas DSI Hot Water Heater  
Monitor Panel (Standard on Goosenecks Only)  
Wired for Air Conditioning  
12 L.E.D. Volt Lights  
12 Volt Roof Vent w/ Fan in Bath  
Battery Box and Converter  
Cherry Panel Cabinetry with Flat Panel Doors  
Queen Size Bed with spread in Gooseneck  
Vented Complete Bathroom Facility Including Shower/Toilet  
L.E.D. Porch Light with Switch  
Large Grab Handle at Side Door  
Hydraulic Jack on Goosenecks

#### Tank Sizes

60 Gal Fresh Water-Goosenecks    60 Gallon Grey Tank    30 Gallon Black Tank  
51 Gal Fresh Water-Tags

#### \*\*\* Gas package Includes:

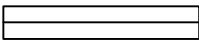

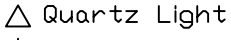

**Gas DSI Water Heater, Gas Refrigerator, Gas Stove Top & Cover  
Stove Hood, Gas Furnace, LP&CO2 Detectors & LP Bottles**

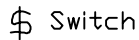

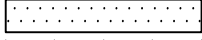
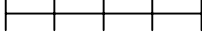
#### Furniture Options


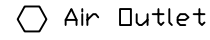
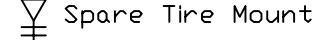
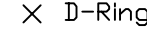
Vinyl Color:                      Black                      Latte (Light Tan)                      Cocoa (Dark Tan)


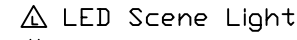


## OUTLAW STANDARD EQUIPMENT:

Interior Height	6'6"
Interior Width	96"
Exterior Aluminum	.030"
Wheels	15" Radials Silver Mod Rims with Chrome Cap and Lugs
Frame:	Painted / Z-Tech Undercoating
Tags	6" Tube - 4 Foot Beavertail
Gooseneck	8" Tube - 4 Foot Beavertail
Torsion Axles	Dexter E-Z Lube - All Wheel Electric Brakes
	82" Between Wheel Wells
Wall Construction	1" x 1 1/2" Steel Tube
16" Centers	Walls, Ceiling & Floor
Flooring	3/4" Plywood with Darco Moisture Barrier
Ceiling & Walls	White Vinyl
Side Door	48" with Flush Lock and Deadbolt - Piano Hinge
Side Door Construction	Aluminum Tube
Ramp Door	Spring Assisted with Cambars and 16" Aluminum Flap
Roof	1 Pc. Aluminum
Radius Corner	Stainless Steel
Bull Nose	Front Cast Corners with Stainless Steel Top Wrap
Electric	2 - 12V L.E.D. Lights with Switch
Breakaway Kit	Standard
Fenders	Aluminum Teardrop with Turn Signals
Stoneguard	Standard
3rd Member	48" Triple Tube Tongue
Grab Handles	(2) Standard on Ramp Door
Back End	Wrapped with Mill Finish Aluminum
Clearance Lights	L.E.D.
Tail Lights	L.E.D. in Uprights & L.E.D. License Plate Light
Spring cover	White Aluminum
Jack	<b>Single Hydraulic Jack w Battery on Gooseneck only</b>
Warranty	3 Year Factory Warranty

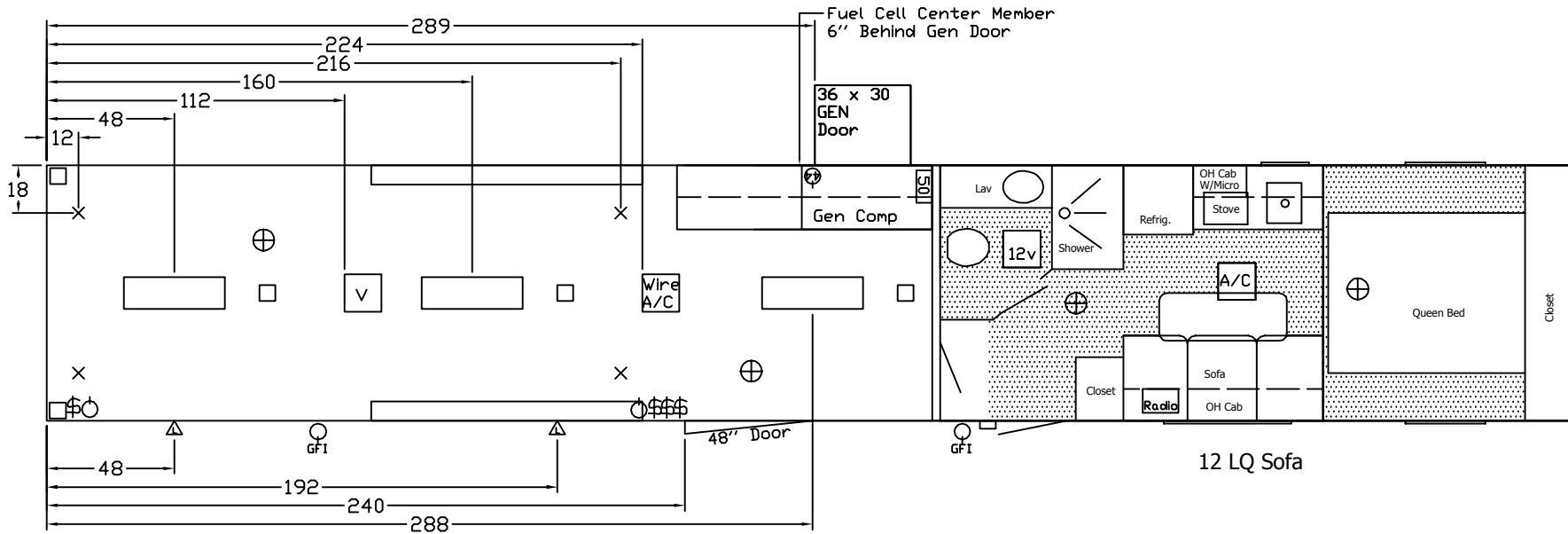
-  4' Flour Light
-  12v Light
-  Quartz Light
-  110v Recept

-  Switch
-  Ethernet Cable
-  Recessed E-Track
-  Surface E-Track

-  Air Inlet
-  Air Outlet
-  Spare Tire Mount
-  D-Ring

-  Speaker
-  LED Scene Light
-  20 Amp Recept
-  20 Amp Switch

8' BEAVERTAIL



Vintage Trailers Ltd.  
OUTLAW

Dealer: STOCK  
 Model: QL848GN 12' SOFA LQ  
 Serial #: 180160  
 Customer: None

Salesman: TODD KUJAWA  
 Date: 9/19/17  
 Revision Date: None  
 Page: 1 of 1    Scale: 3/16"=1'

Please Review, Sign, Date, and Return Sign:  
 Date:





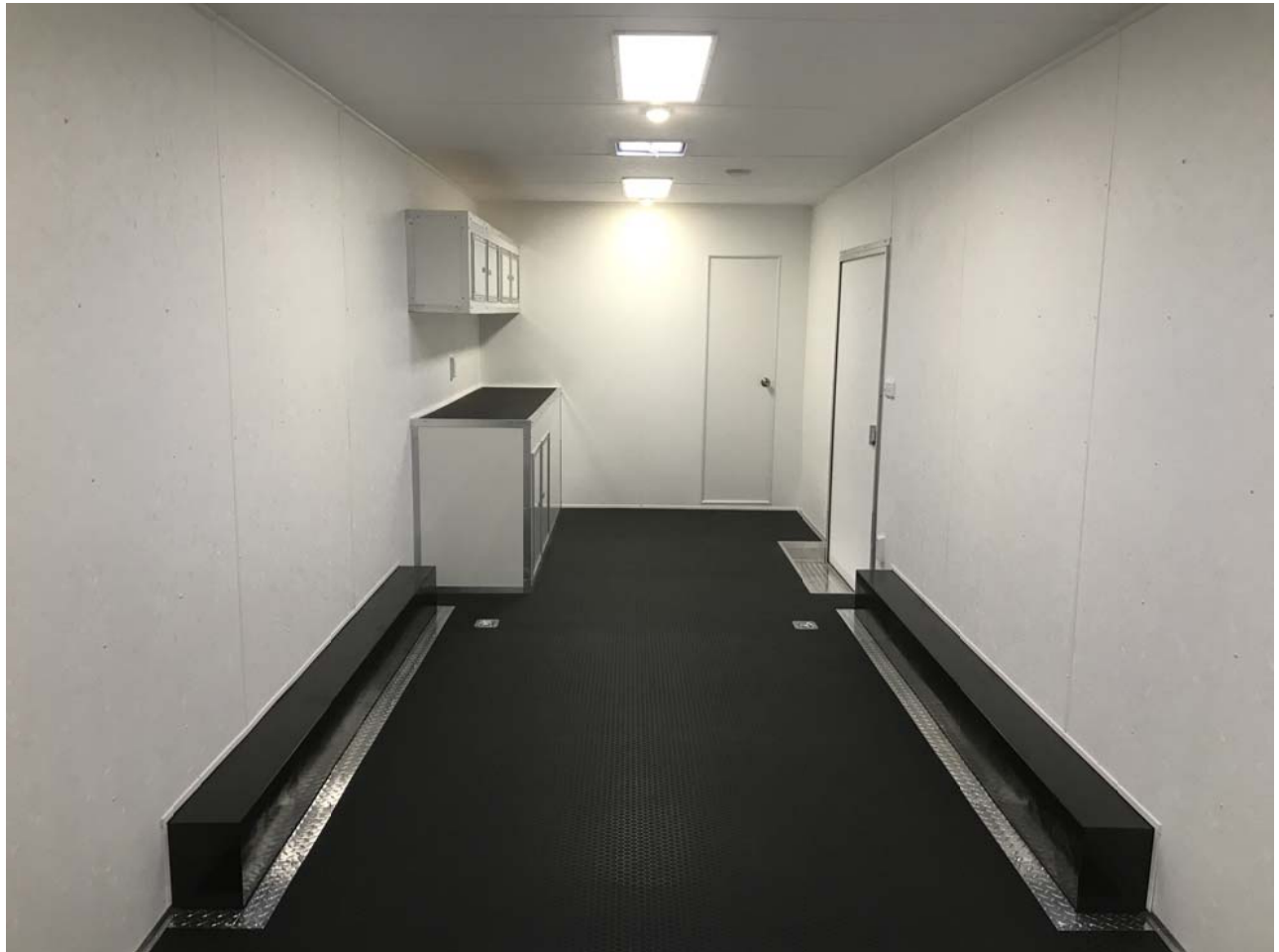




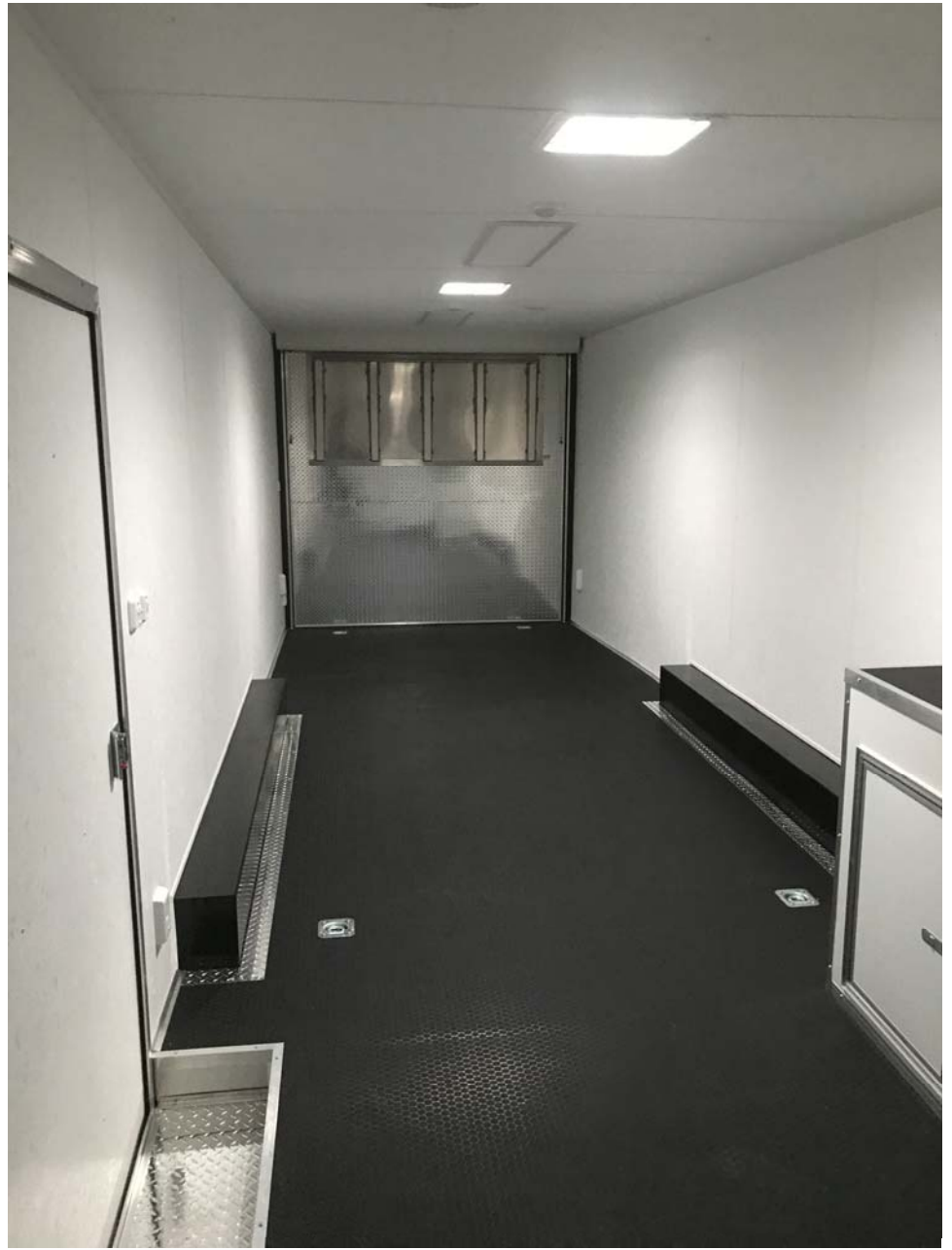






















# Custom Race Trailers



**CALL KELLY**



**(815) 529-2647**

**Family Ran Business**