

**2019 Renegade Classic Motorhome Customer Prices**



Westside Motorcoach  
 11201 S. Grant Hwy  
 Marengo, IL 60152  
 (847)812-2972  
 (815)923-0101 Fax

Customer Name: K01-3051  
 Address:  
 Phone Number:  
 Fax Number:  
 E-mail Address:

**Renegade Motorhome Standard Features and Options**

Qty.	Description	Price	Extension
<b>Chassis Options</b>			
0	Freightliner Cascadia 600 hp DD16, Allison, Tandem, Assurance Pkg	\$ 210,000	\$ -
0	Freightliner Cascadia 600 hp DD16, Allison, Tandem	\$ 205,674	\$ -
0	Volvo VNL 500HP 1,850 D13 w/ I-Shift, Tandem, LED, EHC, Disc Brakes, TPMS	\$ 194,600	\$ -
0	Western Star 5700XE 600HP 1,850 D16 w/ DT12, Tandem	\$ 196,000	\$ -
0	Western Star Extended Warranty- Engine & Emissions 7 yr 250k Mile	\$ 6,700	\$ -
0	Peterbilt 567 565 hp 1,850 Cummins X15, Ultrashift+, Dual Tandem	\$ 198,800	\$ -
0	Freightliner Cascadia 113 505 hp DD13, Allison, Disc Dual Tandem	\$ 199,002	\$ -
1	Freightliner Cascadia 600 hp DD16, DT12, Disc Dual Tandem	\$ 198,492	\$ 198,492
0	Freightliner Cascadia 600 hp DD16, DT12, Disc Single Axle	\$ 188,776	\$ -
0	Freightliner M2-112 505 hp DD13 w/ Allison	\$ 174,083	\$ -
0	Freightliner M2-112 505 hp DD13 w/ Ultra Shift	\$ 167,804	\$ -
0	Freightliner M2 350 h.p. Cummins w/ Allison	\$ 123,551	\$ -
0	M2- Fiberglass Tank Covers/Cab Entry Steps- Painted	\$ 1,393	\$ -
1	Wheel Alignment	\$ 413	\$ 413
0	Chassis Stretch	\$ 3,850	\$ -
0	Add Tag Axle	\$ 11,900	\$ -
0	Customer Supplied Chassis (per quote)	\$ 3,500	\$ -
0	18k Front Axle w/ Super Duty Frame Rails (required on 2200 & 2400AS)	\$ 4,200	\$ -
<b>Some Chassis Have Limited Availability</b>			
<b>Conversion Model</b>			
0	37' Triple Slide, Front Entry, Mid Bath- 37CTS	\$ 202,971	\$ -
0	38' Triple Slide, Front Entry, Mid Bath w/ Water Closet- 38CSB	\$ 206,182	\$ -
0	41' Triple Slide, Front Entry, Mid Bath, Rear Wardrobe- 41CRW	\$ 218,861	\$ -
0	42' Triple Slide, Mid Entry, Bath and a Half- 42CRB	\$ 222,772	\$ -
1	45' Triple Slide, Mid Entry, Bath and a Half- 45CBH	\$ 232,896	\$ 232,896
0	45' Quad Slide, Mid Entry, Mid Bath, Rear Wardrobe- 45CMB	\$ 235,696	\$ -
0	45' Five Slide, Mid Entry, Mid Bath, Rear Closet Slide- 45CRS	\$ 236,809	\$ -
0	45' Triple Slide, Front Entry, Two Bath- 4534BK	\$ 241,881	\$ -
0	extra 1' length	\$ 4,200	\$ -
1	Non-Standard Floorplan	\$ 7,000	\$ 7,000
1	Material Surcharge	\$ 6,314	\$ 6,314

## 2019 Renegade Classic Motorhome Customer Prices

Qty.	Description	Price	Extension
<b>Exterior Features &amp; Options</b>			
1	30,000 Lb. Tag Hitch (Tandem Axle MH Models) (STD 32'+)	\$ -	\$ -
0	12,000 lb 2" Tube Hitch- Ltd Tongue Weight (single axle models)	\$ -	\$ -
1	White Side-hinged luggage doors with strut assist- STD	\$ -	\$ -
1	Electric Trailer Brake Controller w/ Digital Display- STD	\$ -	\$ -
1	Full 7 '6" Interior Height (90")- STD	\$ -	\$ -
1	Undercoating- STD	\$ -	\$ -
1	LED Docking Lights- STD	\$ -	\$ -
1	Full Width mud-flap w/ Stainless Steel Renegade logo- STD	\$ -	\$ -
1	Lighted grab handle with Trimark Keyless Entry- STD	\$ -	\$ -
1	4 Point Auto Leveling System- STD	\$ -	\$ -
1	48" Cabover Bunk- STD- STD	\$ -	\$ -
1	Commercial Grade 5/8" FRP Construction- STD	\$ -	\$ -
1	2" x 2" Tube Steel Frame Built on the Chassis- STD	\$ -	\$ -
1	Coach Floor Is a "Super Sandwich" - Galvanized Vapor Barrier over Steel Frame, Studded with 2x4's Screwed to Frame- STD	\$ -	\$ -
1	Insulated with Rigid Foam, then Topped with ¾ Fir Plywood- STD	\$ -	\$ -
1	Waterlines Above floor- STD	\$ -	\$ -
1	2" x 2" Studded Walls and 2" x 3" Ceiling with Rigid Foam Insul.- STD	\$ -	\$ -
1	Side Wall & Roof with R8 Insulation Factor- STD	\$ -	\$ -
1	100% Walk On Roof- STD	\$ -	\$ -
1	Powder Coated Steel Storage Compartments with Felt liner & light- STD	\$ -	\$ -
1	Heavy Duty Metal Electric Double Entrance Step w/Even Stair Tread- STD	\$ -	\$ -
1	26" x 78" Entry Door w/Window, Deadbolt and Screen Door- STD	\$ -	\$ -
1	Porch Light at Entrance Door w/Lighted Grab Handle- STD	\$ -	\$ -
1	Aluminum Wheels with Center Caps, Hub Covers & Nut Covers- STD	\$ -	\$ -
1	D.O.T. Approved LED Marking and Signaling Lights- STD	\$ -	\$ -
1	Mounted Glad Hands- STD	\$ -	\$ -
1	7 Pin Bargeman Plug for Trailer Hookup- STD	\$ -	\$ -
0	20 mil TempCoat- Walls & Ceiling Only- per foot	\$ 112	\$ -
0	20 mil TempCoat- Walls, Ceiling, Floor- per foot	\$ 140	\$ -
1	60" X 96" Larger Bunk Area	\$ 1,610	\$ 1,610
1	Bright Stainless Side Swing Baggage Doors (IPO STD)	\$ 693	\$ 693
0	Stainless Steel on Bunk Exterior	\$ 350	\$ -
1	Spray in Liner in Cargo Boxes	\$ 2,310	\$ 2,310
1	Diamond Shield Anti-Chip Protection- Required on Painted Units	\$ 1,050	\$ 1,050
1	Power Locking Side Swing Baggage Doors - Where Applicable	\$ 1,575	\$ 1,575
0	12v LED High/Low Beam Scene Light	\$ 322	\$ -
0	Cab Cutout 29" x 29"	\$ 700	\$ -
1	LED Lights Under Coach and Slide Outs Both Sides- Color Changing	\$ 2,450	\$ 2,450
0	Third Set of Brake Lights- Mounted High	\$ 280	\$ -
0	Aero Cap- No Bunk, Full Walk Thru	\$ 7,000	\$ -
0	Aero Cap- Fixed Bunk, No Stand-Up, Walk Thru	\$ 4,200	\$ -
0	Paint Aero Cap	\$ 2,555	\$ -
0	Paint roof awing C/S, Can on R/S	\$ 3,290	\$ -
1	TempCoat Sewage & Water Management Boxes	\$ 735	\$ 735
34	Spray Foam Insulation Walls & Ceiling	\$ 154	\$ 5,236
0	Blue Board Foam Insulation	\$ 41	\$ -
0	12v & 110v Recept. In Storage Box	\$ 140	\$ -
0	110v Recept. In Storage Box	\$ 126	\$ -
0	Additional Exterior 110v Receptacle	\$ 140	\$ -
0	20k Receiver Tube Insert- Ship Loose	\$ 371	\$ -

**2019 Renegade Classic Motorhome Customer Prices**

<b>Qty.</b>	<b>Description</b>	<b>Price</b>	<b>Extension</b>
<b>Warranty</b>			
1	One Year Limited Conversion Warranty	\$ -	\$ -
<b>Slide Outs</b>			
		\$ -	\$ -
1	6' Slideout Room by Floorplan	\$ 5,390	\$ 5,390
1	12' Slideout Room by Floorplan	\$ -	\$ -
0	Rear Wardrobe Slide- Standard by Floorplan	\$ 6,930	\$ -
0	Kitchen Slideout Room by Floorplan	\$ 6,930	\$ -
1	Wardrobe Slideout by Floorplan	\$ -	\$ -
0	Bunk & Closet Slideout Ensemble	\$ 9,625	\$ -
1	Bed Slideout by Floorplan (150 Gallon Fresh Water)	\$ -	\$ -
1	15' LQ Slideout Upgrade- Requires Residential Fridge	\$ -	\$ -
<b>Awnings</b>			
		\$ -	\$ -
0	Carefree w/ Lighted Lead Rail- 18' and less- STD	\$ -	\$ -
0	Carefree Lateral Arm w/ Lighted Lead Rail- 19'-22'	\$ 1,785	\$ -
0	Awning Hardware Color: Black w/ Black Fabric	\$ -	\$ -
0	Slide Topper Awning Hardware Color: White w/ Black Fabric	\$ -	\$ -
0	A&E Power Weather Pro up to 20' (STD 24' + up)	\$ -	\$ -
0	Checkered Finish for A&E Weather Shield or Weather Pro	\$ 105	\$ -
0	Awnings Over Windows (ea.)	\$ 385	\$ -
0	Single Power Awnings Over Window (ea.)	\$ 1,379	\$ -
0	Double Power Awning Over Window (ea.)	\$ 1,813	\$ -
1	ZipDee Awning w/Lighted Lead Rail- Roof Mounted	\$ 11,571	\$ 11,571
0	Roof Mount Awning Can	\$ 5,593	\$ -
<b>Windows</b>			
		\$ -	\$ -
1	Bonded Thermopane Windows- STD	\$ -	\$ -
1	United Manual Day/ Manual Night Shades- STD	\$ -	\$ -
0	United Power Night/Manual Day Window Shades	\$ 840	\$ -
1	Skylight Over Shower	\$ 413	\$ 413
1	2 Bunk Windows 12x30 w/ Valances & Shades	\$ 735	\$ 735
0	Single Bunk Window 12x30 w/ Valance & Shade	\$ 371	\$ -
0	Cab Window Tint	\$ 315	\$ -
0	Larger Kitchen Window	\$ 245	\$ -
0	Add 36" x 24" Non-Opening Window w/Valance & Shade	\$ 735	\$ -
0	48" x 24" Non-Opening Window w/Valance & Shade IPO Standard	\$ -	\$ -
<b>Interiors</b>			
		\$ -	\$ -
1	Cab / Conversion Divider Privacy Shade- STD	\$ -	\$ -
1	Hardware & Fixture Finish- Brushed Nickel- STD	\$ -	\$ -
1	"Soft Touch" Padded Vinyl Ceiling (White)- STD	\$ -	\$ -
1	Décor Package- _____, _____ Valances	\$ -	\$ -
1	Bedding- STD	\$ -	\$ -
1	Full 90" Interior Height	\$ -	\$ -
1	Large Cab Walk Through w/Flexible Rubber Boot & Privacy Shade- STD	\$ -	\$ -
1	Electric Trailer Brake Controller with Digital Display- STD	\$ -	\$ -
1	Raised 6 Panel Interior Passage Doors- STD	\$ -	\$ -
1	Accent Lighting Throughout with Wall Switches- STD	\$ -	\$ -
1	Décor Maple Valances Around Windows- STD	\$ -	\$ -
1	48" x 95" Bunk Over Cab- STD	\$ -	\$ -
1	Double Bay Stainless Steel Sink in Kitchen with Covers- STD	\$ -	\$ -
1	Solid Maple Mirrored Medicine Cabinet in Bath- STD	\$ -	\$ -

**2019 Renegade Classic Motorhome Customer Prices**

<b>Qty.</b>	<b>Description</b>	<b>Price</b>	<b>Extension</b>
0	12v Interior Multiplex Lighting	\$ 4,193	\$ -
1	Non-Standard Interior Material Selections	\$ 2,100	\$ 2,100
0	Padded Walls w/ Wainscoting- Std Fabric- Per Foot	\$ 84	\$ -
0	Padded Walls w/ Wainscoting- Optional Fabric- Per Foot	\$ 105	\$ -
0	Wood Valances- 2015 Classic Style w/ NO Décor Tops	\$ -	\$ -
1	Infinity Light	\$ 700	\$ 700
1	Full Length Mirror (one is standard) LQ, behind toilet	\$ 210	\$ 210
0	Cab Privacy Curtain- Rail Type	\$ 315	\$ -
1	Cab / Conversion Divider (Wood Doors)	\$ 1,330	\$ 1,330
0	Padded Walls- No Wainscoting- Std Fabric- Per Foot	\$ 84	\$ -
34	Padded Walls- No Wainscoting- Optional Fabric (Ander Nat.)- Per Foot	\$ 105	\$ 3,570
1	Ceiling Fan- Bedroom	\$ 210	\$ 210
0	Outlet w/ USB Port	\$ 98	\$ -
0	Extra Interior Receptacle	\$ 70	\$ -
0	Wood Cup Holders on S/O Fascia		
0	Beveled Mirror- N/A all Floor Plans	\$ 560	\$ -
1	Privacy Curtains for Bunk	\$ 420	\$ 420
0	Beadboard Wainscoting	\$ 490	\$ -
0	Shelf w/ Outlet in Bunk	\$ 210	\$ -
0	Ceiling Color in Slides	\$ 105	\$ -
0	Ceiling Color	\$ 105	\$ -
0	Ceiling Fabric Same as Wall Fabric	\$ 686	\$ -
0	Extra 110v Outlet- Interior	\$ 105	\$ -
0	Conversion/Cab Entry - Wood Trim	\$ 385	\$ -
0	Bedliner in Stepwell	\$ 315	\$ -
0	Larger Rungs on Bunk Ladder	\$ 105	\$ -
	<b>Furniture</b>	\$ -	\$ -
1	UltraLeather Seat Fabric Package- STD	\$ -	\$ -
1	Small King Bed 66 x 80 w/ Memory Foam Mattress- STD	\$ -	\$ -
1	Dream Dinette Feature- STD	\$ -	\$ -
1	Bunk Mat- STD	\$ -	\$ -
1	Flexsteel UltraLeather Captains Chairs w/Adjustable Arms in Cab- STD	\$ -	\$ -
0	King Size Bed IPO Mini-King (NA All Models)	\$ 700	\$ -
0	Free Standing Dinette w/ 4 Chair & Storage Credenza	\$ 1,190	\$ -
0	(2) Recliners Swivel Rocker (Model 283) IPO Sofa	\$ 1,540	\$ -
0	Theater Seating IPO Sofa	\$ 1,253	\$ -
0	Heated Flexsteel Captains Chairs in Cab (pair)	\$ 280	\$ -
1	Flexsteel Hide-a-Bed Sofa w/ Air Mattress ILO Easy Bed	\$ 833	\$ 833
0	Hide-a-Bed Sofa w/ Air Mattress	\$ 2,100	\$ -
0	Ottoman w/Storage	\$ 420	\$ -
0	(2) Villa Euro Recliners IPO Sofa	\$ 1,120	\$ -
0	Manual Lumbar for Captains Chairs- Each	\$ 105	\$ -
0	Free Standing Dinette w/ 3 Chair & Extension	\$ 1,260	\$ -
0	Free Standing Dinette w/ 3 Chair	\$ 1,190	\$ -
0	Extra Non-Folding Chair	\$ 420	\$ -
0	Extra Folding Chair	\$ 490	\$ -
0	Villa Euro Recliner	\$ 1,330	\$ -
0	(2) Villa Euro Recliners ILO Easy Bed	\$ 1,610	\$ -
0	Flexsteel Sleeper Dinette w/ Cushion	\$ 210	\$ -
0	Solid Surface Table w/Flush Mounted Holders	\$ 490	\$ -
0	3 Adj. shelves in shirt closet above night stand, keep rod	\$ 70	\$ -
0	Beveled Mirror on Wall	\$ 560	\$ -

**2019 Renegade Classic Motorhome Customer Prices**

<b>Qty.</b>	<b>Description</b>	<b>Price</b>	<b>Extension</b>
<b>Cabinets &amp; Stain</b>		\$ -	\$ -
1	Maple Cabinets- STD	\$ -	\$ -
1	Dove Tailed Drawers- STD	\$ -	\$ -
1	Stacked Silverware Drawer- STD	\$ -	\$ -
1	Maple Framed Mirror in Hallway or Bedroom (varies by model)- STD	\$ -	\$ -
1	Glass Control Panel Cover- STD	\$ -	\$ -
1	Pull-Out Pantry- STD	\$ -	\$ -
1	Self Closing Drawer Slides- STD	\$ -	\$ -
1	Residential Style Finish Drawers- STD	\$ -	\$ -
1	Optional Motorhome Cabinet Stain	\$ 1,575	\$ 1,575
1	Epic Slab Style Cabinet Doors	\$ 833	\$ 833
0	HG905S Cabinet Finish (Includes Wainscoting)	\$ 7,350	\$ -
0	HG905S Cabinet Finish (No Wainscoting)	\$ 5,950	\$ -
0	Upgrade Cherry Cabinets: Natural	\$ 9,450	\$ -
0	Cabinet in the Bunk	\$ 770	\$ -
0	Optional Cabinet Door Design	\$ 1,484	\$ -
0	Upgrade Select Hickory Cabinets: Natural	\$ 9,975	\$ -
0	Slide Out Kitchen Base	\$ 1,190	\$ -
0	Tall Sliding Drawer under cook top	\$ 210	\$ -
1	Can drawer under cook top	\$ 210	\$ 210
0	Glass Door on Cabinet	\$ 70	\$ -
<b>Flooring</b>		\$ -	\$ -
1	Carpeted Floor Mats (2) in Cab & Runner for Living Area- STD	\$ -	\$ -
1	Matching Carpet in Cab & Living Area- STD	\$ -	\$ -
1	Vinyl floor in living room, galley, hallway and bath areas, carpet in bedroom-	\$ -	\$ -
34	Porcelain Tile (per foot)	\$ 175	\$ 5,950
0	Polished Porcelain Tile (per foot)	\$ 210	\$ -
0	Tiled Stepwell- Included w/ Tile	\$ -	\$ -
0	Angled or Brick Pattern Tile- Motorhome	\$ 700	\$ -
0	Angled or Brick Pattern Tile- Motorhome w/ Sport Deck	\$ 490	\$ -
0	Heated Tile, Per Lineal Foot	\$ 175	\$ -
0	Tiled Wainscoting in Bathroom	\$ 490	\$ -
0	Granite Flooring (per foot)	\$ 245	\$ -
0	Extra Carpet Runner	\$ 35	\$ -
<b>Countertops: Solid Surface</b>		\$ -	\$ -
1	High Polished Solid Surface countertops- STD	\$ -	\$ -
1	Decorative tile backsplash in all galley areas- STD	\$ -	\$ -
0	Granite Countertops (PER QUOTE)	\$ 8,393	\$ -
0	Corian Countertops Upgrade- Non-Standard Material Charge Applies	\$ 1,953	\$ -
0	Quartz Countertops Upgrade- Non-Standard Material Charge Applies	\$ 8,393	\$ -
0	Bright Stainless Backsplash	\$ 490	\$ -

## 2019 Renegade Classic Motorhome Customer Prices

Qty.	Description	Price	Extension
<b>Appliances</b>			
1	Samsung Stainless Steel OTR Convection Microwave- STD	\$ -	\$ -
1	Samsung 18 cu ft Residential French Door Refer w/ Ice- STD	\$ -	\$ -
1	Recessed SS LP Cooktop w/ Removable Solid Surface Covers- STD	\$ -	\$ -
1	Outside Refrigerator Prep- 12V/110V wiring only, no slide tray- STD	\$ -	\$ -
0	13 cu ft Elite 4 door RV Refrigerator w/ Ice & Water	\$ 2,163	\$ -
0	13 cu ft Elite 4 door RV Refrigerator <b>NO</b> Ice & Water	\$ 1,743	\$ -
1	Outside Refrigerator/Freezer on Slide Tray	\$ 2,240	\$ 2,240
0	3 Burner w/ Oven SS (NA on all Models)	\$ 434	\$ -
1	2 Burner Induction Electric Cooktop	\$ 833	\$ 833
0	Washer & Dryer- Combo Unit	\$ 2,170	\$ -
0	Washer & Dryer- Stack	\$ 2,170	\$ -
1	Central Vacuum System- Basement Mounted	\$ 455	\$ 455
0	LP Quick Disconnect C/S Midship Behind Lockable Door	\$ 273	\$ -
1	Weber 110v Electric Grille on Slide Tray	\$ 1,190	\$ 1,190
0	Outside Refer Prep- 110v Outlet- No Slideout Tray	\$ 210	\$ -
0	Outside Refer Prep- 110v Outlet & Slideout Tray	\$ 490	\$ -
0	2 Burner Electric Cooktop ( w/o Knobs)	\$ 1,190	\$ -
0	Recessed Gas Cooktop (Corian only)	\$ 455	\$ -
0	Washer & Dryer Prep w/ Rods & Shelves	\$ 700	\$ -
0	Dyson 59 Vacuum System	\$ 483	\$ -
0	Dishwasher Drawer	\$ 1,393	\$ -
<b>Water Systems</b>			
1	Toilet- Macerator- Bone Color (Electric Flush)- STD	\$ -	\$ -
1	150 Gallon Fresh Water Tank- STD	\$ -	\$ -
1	Single Lever Kitchen Faucet w/ Retractable Sprayer- STD	\$ -	\$ -
1	Waste Tank Flush- STD	\$ -	\$ -
1	Outside Spigot by Holding Tanks- STD	\$ -	\$ -
1	Water Management Bay- STD	\$ -	\$ -
1	(2) 75 Galon Holding Tanks- STD	\$ -	\$ -
1	(2) Holding Tank Heat Strips per Tank- STD	\$ -	\$ -
1	Variable Flow Water Pump- STD	\$ -	\$ -
1	Whole House Water Filter- STD	\$ -	\$ -
1	Single Bowl Kitchen Sink ILO Double Bowl	\$ -	\$ -
1	10 Gallon LP/110V Water Heater- STD	\$ -	\$ -
1	One-Piece Fiberglass Shower- STD	\$ -	\$ -
1	Glass Shower Door- STD	\$ -	\$ -
0	Outside Spigot (one is standard)	\$ 210	\$ -
0	Flo-Jet Macerator Sewage System	\$ 833	\$ -
0	Solid Surface Shower w/ Accent	\$ 5,040	\$ -
0	Extra Holding Tank	\$ 490	\$ -
0	Black Macerator Ceramic Toilet ILO Bone	\$ 490	\$ -
0	Solid Surface Bath Sink ILO Standard	\$ 252	\$ -
0	Truma Aquago Tankless Water Heater	\$ 952	\$ -
0	Girard Tankless Water Heater	\$ 210	\$ -
0	Outside Shower	\$ 245	\$ -
0	Spray Away Outside Hose	\$ 154	\$ -
1	Additional Water Pump Switch- Rear Bath	\$ 175	\$ 175
0	2nd Lav Sink	\$ 315	\$ -
0	Solid Surface Bath Sink ILO Stainless	\$ 252	\$ -
0	Bigger Bathroom w/ Two Sinks	\$ 1,680	\$ -



## 2019 Renegade Classic Motorhome Customer Prices

Qty.	Description	Price	Extension
0	Convert Half Bath to Full Bath	\$ 1,260	\$ -
0	Add Second Full Bath to Single Bath Floorplan (Includes: Shower, Macerator Toilet, Lav, Cabinets, Vountertop)	\$ 5,453	\$ -
0	Add Half Bath to Single Bath Floorplan (Includes: Toilet, Lav, Cabinets, Vountertop)	\$ 4,193	\$ -
0	Extra 100 Gallon Fresh water tank w/variable flow pump in Storage box	\$ 1,050	\$ -
	<b>Mechanical Systems</b>	\$ -	\$ -
2	8-D AGM Batteries- (2 STD)	\$ -	\$ -
1	Surge Guard Protector w/ Monitor Panel- STD	\$ -	\$ -
1	Magnum 2800 Watt Inverter w/ AGS- STD	\$ -	\$ -
1	Power Vent (2) w/ One Remote- STD	\$ -	\$ -
1	Pre-wire for up to 3 solar panels, 160 watts each- STD	\$ -	\$ -
1	15,000BTU Roof A/C with Heat Pumps (3ea if over 40')- STD	\$ -	\$ -
1	35,000 BTU Furnace w/Electronic Ignition- STD	\$ -	\$ -
1	Digital Wall Mounted Thermostat for Heating & Cooling- STD	\$ -	\$ -
1	24.2gal LP Tank with Regulators & Gauge- STD	\$ -	\$ -
1	8kW Onan Quiet Diesel w/ Switch in Living Quarters & Bedroom	\$ -	\$ -
1	25' 50 amp (Shore Line) Power Cord- STD	\$ -	\$ -
1	Automatic Power Transfer Switch- STD	\$ -	\$ -
1	Monitor System: LP, Batteries, Wtr & Hldng Tnks- STD	\$ -	\$ -
1	GFCI and Standard Receptacles Throughout- STD	\$ -	\$ -
1	14" x 14" Remote Control Power Vent Fan in Bath & Living Quarters- STD	\$ -	\$ -
1	Fire Extinguisher; Carbon Monoxide, LP Gas & Smoke Detectors- STD	\$ -	\$ -
1	12.5 kW Onan Quiet Diesel Generator- Coaches Over 40'- STD	\$ -	\$ -
0	8 kW Onan Quiet Diesel Generator- Coaches Under 40'- STD	\$ -	\$ -
0	Solar Panels	\$ 819	\$ -
1	Power Retractable Shore Cord Reel	\$ 910	\$ 910
0	Additional 8D Battery	\$ 1,050	\$ -
0	Additional Vent Fan Remote	\$ 35	\$ -
1	Deluxe Power Vent (2 Standard) w/ 1 Remote	\$ 413	\$ 413
0	Larger LP Tank (50 Gallon)	\$ 455	\$ -
0	Remote LP between Frame Rails- 38 Gallons (very limited models)	\$ 1,050	\$ -
1	AquaHot 450 Hydronic Heat and Hot Water w/ Engine PreHeat Includes One Water Management Box/ Sewage Bay Heater	\$ 9,800	\$ 9,800
0	Fill with Propane	\$ 245	\$ -
0	12.5 kW Onan Quiet Diesel Generator- Coaches Under 40'	\$ 3,661	\$ -
0	Gen-Turi Exhaust	\$ 490	\$ -
1	Extra Magnum 2800 Watt Inverter- Wired to A/C	\$ 3,213	\$ 3,213
0	12 Volt Heater in Compartment	\$ 210	\$ -
0	Extra Generator Switch in Cab	\$ 175	\$ -
0	Mount Hydraulic Jack Controls on Entry Wall	\$ 70	\$ -
0	MaxAir Deluxe Vent Covers ILO Std.	\$ 105	\$ -

**2019 Renegade Classic Motorhome Customer Prices**

Qty.	Description	Price	Extension
<b>Electronics</b>			
1	Samsung Blu-Ray Player in Living Room- STD	\$ -	\$ -
1	Samsung Blu-Ray Player in Bedroom- STD	\$ -	\$ -
1	360 Degree UHF/VHF TV Antenna w/ Power Amp- STD	\$ -	\$ -
1	6.1" Screen Sat Ready Radio, GPS w/ RV Maps- STD Freightliner Only- (N/A All Chassis)	\$ -	\$ -
1	Side Bullet Cameras- STD	\$ -	\$ -
1	Back-Up Camera w/ Trailer Plug-STD (Run Through Radio- Freightliner)	\$ -	\$ -
1	Winegard Mission RT4035ST In-Motion Satellite Dish- STD (Receivers not included)	\$ -	\$ -
1	Pre-Wire for Stationary HD Satellite System- STD	\$ -	\$ -
1	Samsung Soundbar w/ Bluetooth & Wireless Subwoofer- STD	\$ -	\$ -
1	Back-Up Monitor & Camera (Truck Only) STD	\$ -	\$ -
1	Cable TV Hook-Up- STD	\$ -	\$ -
2	40" LED Smart TV in Place of Standard 32" LCD	\$ 693	\$ 1,386
1	In-Wall Outside Entertainment Center: 32" LED TV, AM/FM/CD/DVD & Speakers	\$ 2,373	\$ 2,373
0	Trav'ler SWM3 HD Stationary Satellite Dish- Receivers not included	\$ 1,120	\$ -
0	Satellite Receivers-Specify DirecTv or Dish	\$ 280	\$ -
0	Back-Up Upgrade to 3 Camera System	\$ 875	\$ -
1	Flip Down 19" LCD TV w/ DVD in Bunk	\$ 910	\$ 910
1	Manual TV Slide (Bunk) Avail 40" TV Only	\$ 420	\$ 420
0	Powered Slide for TV at Bunk	\$ 700	\$ -
0	(2) Outside Speakers & AM/FM/CD Player in Storage Comp.	\$ 630	\$ -
1	Cobra CB Radio	\$ 420	\$ 420
0	Cobra Handheld CB Radio	\$ 245	\$ -
0	Back-Up Monitor & Camera (Truck & Trailer) Upgrade	\$ 651	\$ -
0	Back-Up Upgrade to 4 Camera System	\$ 1,421	\$ -
0	50" LED TV with a Lift Behind Sofa	\$ 4,893	\$ -
1	Swing Arm on Slide for TV	\$ 175	\$ 175
1	Do Not Run Camera thru GPS- Use Voyager Monitor	\$ -	\$ -
1	WiFi Ranger Elite FM Signal Booster	\$ 909	\$ 909
1	Wilson WeBoost 4G-X #470510 Cell Signal Booster	\$ 1,008	\$ 1,008
0	Extra Camera for Monitor	\$ 490	\$ -
<b>Misc., Custom &amp; Dealer Installed Options</b>			
0	Retail Factory Pick-up (M-Th before 1pm)	\$ -	\$ -
1	3 Color Full Body Paint	\$ 30,646	\$ 30,646
0		\$ -	\$ -
0		\$ -	\$ -

		<b>MSRP</b>
<b>Total Discounted Selling Price</b>	<b>CALL</b>	<b>\$ 554,299</b>



## ***2019 Renegade Classic Motorhome Customer Prices***

### **Color Selections:**

**Cab Seating- Bison**

**Sofa- Bison**

**Dinette- Bison**

**Carpet- Soft Fleece**

**Décor- Warm Java**

**Tile Flooring- Bardolino Graphite**

**Floor Tile Grout- Sandstone Beige**

**Padded Walls- Ander Natural**

**Bunk Mat- Tan**

**Countertops- Solid Surface- Glimmer**

**Vanity Sink- Stainless Steel**

**Kitchen Backsplash- Copper Chocolate**

**Kitchen Backsplash- Grout- Sandstone Beige**

**Kitchen Sink- Stainless Steel**

**Cabinets & Trim- Standard Maple- Italian Nutmeg**

**Shower- Riverstone**

**Ceiling- White**

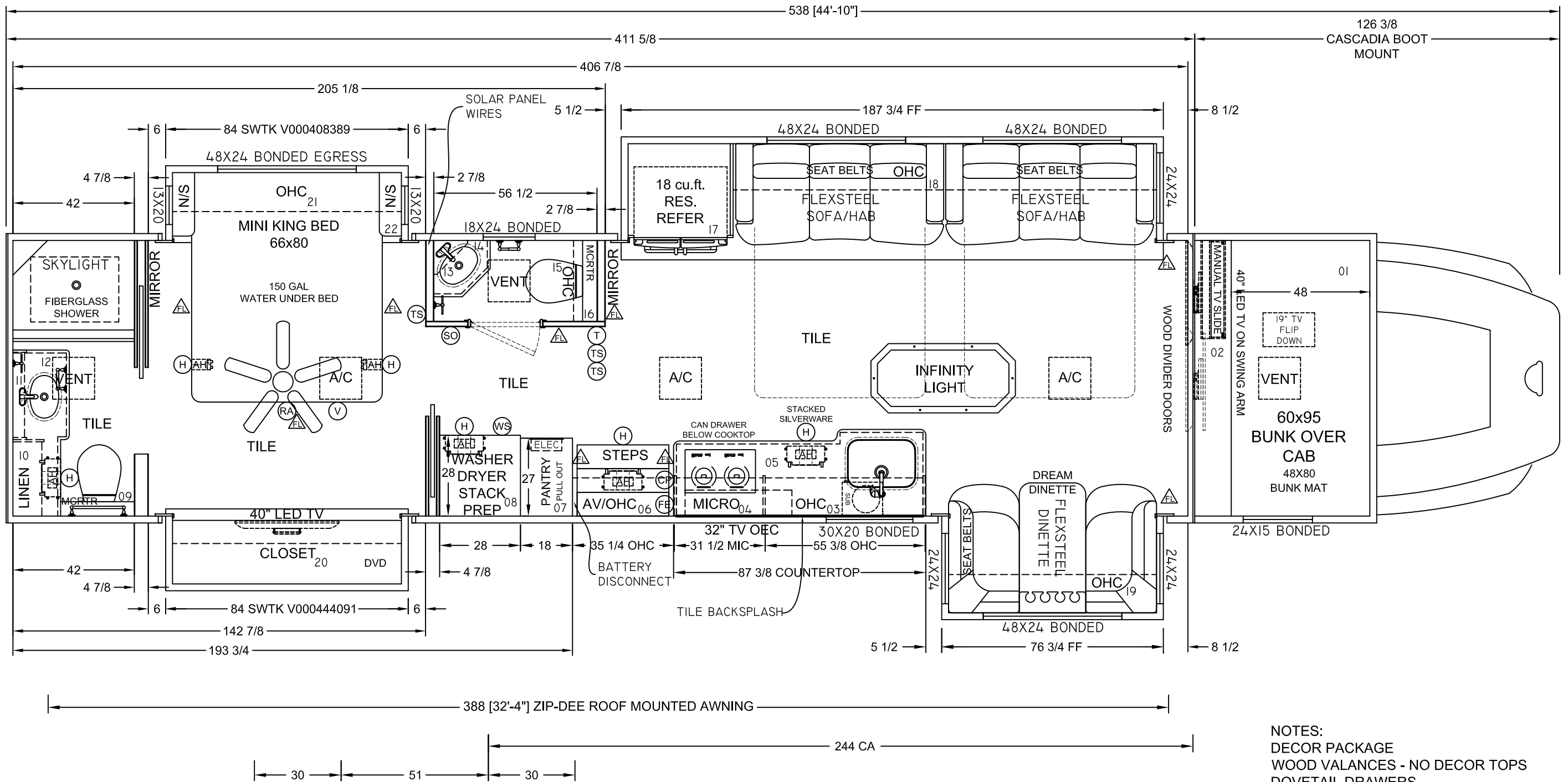
**Toilet- Bone**

**Interior Hardware Color: Satin Nickel**

**Awning Hardware- Black w/ Black Fabric**

**Slide Topper Awning Hardware- Black w/ Black Fabric**

**Ceiling Fan- White/White**



- 00 - COUNTERTOPS
- 23 - WINDOW VALANCES
- 24 - AQUA HOT COVERS
- 25 - DREAM DINETTE CUPHOLDER
- 26 - STACKED SILVERWARE DRAWER
- 27 - CAB WOOD TRIM

NOTES:  
 DECOR PACKAGE  
 WOOD VALANCES - NO DECOR TOPS  
 DOVETAIL DRAWERS  
 TILE BACK SPLASH IN KITCHEN  
 AQUA HOT

REV	REVISION TABLE	DATE	BY	UNLESS SPECIFIED ALL DIMENSIONS ARE IN INCHES	DEALER	WESTSIDE/ZINKE	UNIT #	K01-3051
				TOLERANCES FRACTIONAL: ± 1/16 ANGULAR: ± 1 degree TWO PLACE DECIMAL: ± .010	DRAWN BY	LES	MODEL	CORE
					DATE	9/19/18	DRAWING	FLOORPLAN
							DRAWING #	K01-2912 SUBFLOOR
				SHEET			1 OF 1	
				REV				
THIS DRAWING AND ITS CONTENTS ARE THE PROPERTY OF RENEGADE / KIBBI LLC AND ARE NOT TO BE COPIED OR REPRINTED WITHOUT CONSENT.				DO NOT SCALE DRAWING				